



LEAGUE  
CHAMPIONS 1954-55

LEAGUE CUP  
WINNERS 1964-65

**C  
H  
E  
L  
S  
E  
A**

**FOOTBALL  
CLUB**

**Stamford  
Bridge  
Grounds**  
LONDON SW6

FOOTBALL LEAGUE - DIVISION 1  
SEASON 1965-66

**Saturday,  
21st August, 1965**

**CHELSEA  
v  
BURNLEY**

*KICK-OFF 3 p.m.*

OFFICIAL PROGRAMME — SIXPENCE



# FIXTURES 1965-66

## Football League Division I

© Copyright of the Football League

1965	Opponents	Venue	F. A.
Aug. 21	BURNLEY ...	HOME	.....
" 25	Stoke City ...	Away	.....
" 28	Fulham ...	Away	.....
Sept. 1	STOKE CITY ...	HOME	.....
" 4	Arsenal ...	Away	.....
" 8	Sheffield Wednesday ...	Away	.....
" 11	EVERTON ...	HOME	.....
" 15	SHEFF. WEDNESDAY ...	HOME	.....
" 18	Manchester United ...	Away	.....
" 25	NEWCASTLE UNITED ...	HOME	.....
Oct. 2	West Bromwich Albion ...	Away	.....
" 9	BLACKPOOL ...	HOME	.....
" 16	Blackburn Rovers ...	Away	.....
" 23	LEICESTER CITY ...	HOME	.....
" 26	BENFICA (Prov.) (F) ...	HOME	.....
" 30	Sheffield United ...	Away	.....
Nov. 6	LEEDS UNITED ...	HOME	.....
" 13	West Ham United ...	Away	.....
" 20	SUNDERLAND ...	HOME	.....
" 27	Aston Villa ...	Away	.....
Dec. 4	LIVERPOOL ...	HOME	.....
" 11	Tottenham Hotspur ...	Away	.....
" 18	BLACKBURN ROVERS ...	HOME	.....
" 27	Northampton Town ...	Away	.....
" 28	NORTHAMPTON T. ...	HOME	.....

1966

Jan. 1	Blackpool ...	Away	.....
" 8	TOTTENHAM H. ...	HOME	.....
" 15	Leicester City ...	Away	.....
" 22	(3) ...	.....	.....
" 29	Burnley ...	Away	.....
Feb. 5	FULHAM ...	HOME	.....
" 12	(4) ...	.....	.....
" 19	ARSENAL ...	HOME	.....
" 26	Everton ...	Away	.....
Mar. 5	(5) ...	.....	.....
" 12	MANCHESTER UTD. ...	HOME	.....
" 19	Newcastle United ...	Away	.....
" 26	(6) W. BROMWICH A. ...	HOME	.....
Apr. 2	Leeds United ...	Away	.....
" 9	WEST HAM UNITED ...	HOME	.....
" 11	NOTTINGHAM F. ...	HOME	.....
" 12	Nottingham Forest ...	Away	.....
" 16	Sunderland ...	Away	.....
" 23	(S.F.) ASTON VILLA ...	HOME	.....
" 30	Liverpool ...	Away	.....
May 7	SHEFFIELD UNITED ...	HOME	.....
" 14	F.A. Cup Final ...	.....	.....

(3), (4), (5), (6) and (S.F.) refer to F.A. Cup round dates.

## Football Combination Division I

1965	Opponents	Venue	F. A.
Aug. 28	FULHAM ...	HOME	.....
Sept. 4	ARSENAL ...	HOME	.....
" 11	Swindon Town ...	Away	.....
" 18	IPSWICH TOWN ...	HOME	.....
" 25	Shrewsbury Town ...	Away	.....
Oct. 2	NOTTINGHAM F. ...	HOME	.....
" 9	Southampton ...	Away	.....
" 16	TOTTENHAM H. ...	HOME	.....
" 23	Norwich City ...	Away	.....
" 30	WEST HAM UNITED ...	HOME	.....
Nov. 6	Coventry City ...	Away	.....
" 13	LEICESTER CITY ...	HOME	.....
" 24	Cardiff City ...	Away	.....
" 27	PETERBOROUGH U. ...	HOME	.....
Dec. 4	Tottenham Hotspur ...	Away	.....
" 11	SOUTHAMPTON ...	HOME	.....
" 18	West Ham United ...	Away	.....

### SOUND EQUIPMENT

The sound equipment at Stamford Bridge was installed by Magneta (BVC) Limited, Ackmar Works, Ackmar Road, London, S.W.6.

1966

Jan. 1	NORWICH CITY ...	HOME	.....
" 8	Leicester City ...	Away	.....
" 15	COVENTRY CITY ...	HOME	.....
" 22	Northampton Town ...	Away	.....
" 29	NORTHAMPTON T. ...	HOME	.....
Feb. 5	Fulham ...	Away	.....
" 12	CRYSTAL PALACE ...	HOME	.....
" 19	Arsenal ...	Away	.....
" 26	SWINDON TOWN ...	HOME	.....
Mar. 5	Crystal Palace ...	Away	.....
" 12	Ipswich Town ...	Away	.....
" 19	SHREWSBURY TOWN ...	HOME	.....
" 26	Nottingham Forest ...	Away	.....
Apr. 2	CARDIFF CITY ...	HOME	.....
" 9	Peterborough United ...	Away	.....
" 16	Plymouth Argyle ...	Away	.....
" 30	PLYMOUTH ARGYLE ...	HOME	.....



# THE CHELSEA FOOTBALL & ATHLETIC CO. LTD.



FOUNDED 1905

CLUB COLOURS:  
Shirts: Royal Blue.  
Shorts: Royal Blue.  
Stockings: White.



**League Cup  
Winners 1965**

REGISTERED  
ADDRESS:  
STAMFORD BRIDGE  
GROUNDS,  
FULHAM ROAD,  
LONDON S.W.6.  
(FUL 5545)



**F.A. Youth Cup  
Winners 1960, 1961**

PRESIDENT: The Right Hon. Earl Cadogan, M.C.

BOARD OF DIRECTORS:

J. H. Mears (Chairman), C. J. Pratt (Vice-Chairman)  
L. R. Withey, J. B. Mears, Viscount Chelsea, L. J. Mears

SECRETARY: J. Battersby

TEAM MANAGER: T. Docherty TRAINER: H. Medhurst

HON. MEDICAL OFFICER:

Dr. P. S. Boyne, M.B., B.S. (Lond.), M.R.C.S., L.R.C.P.

**League  
Champions 1955**

## THE TALK OF STAMFORD BRIDGE

**W**ELCOME, Season 1965-66. Welcome, Supporters old and new. Welcome, Burnley, our first opponents, and their followers here today. Quickly as the four months have passed since last we gathered at Stamford Bridge, and though Chelsea have packed 19 first-team matches into the period we used to know as the "close season", there is nothing quite like the official start of the new League season to excite the interest of all concerned — players, officials, clubs and the most important people of all: YOU, the SPECTATORS.

On other pages of this programme, you will find details about our new West Stand and in an accompanying diagram a revised plan of the ground. We would have liked to be able to welcome you today to a neat and complete stadium, but although much has been achieved there is still a great deal to do. Meanwhile, we know we can count on your indulgence regarding any inconveniences that may affect you between now and completion date, which is scheduled for the end of October. In this respect, your early arrival on match days would be of particular assistance . . . and you will, of course, keep clear of the fenced-off area of the new structure.

For your additional information, when

the present alterations are complete, the capacity of this ground will be approximately 55,000, comprising 12,000 reserved seats, 3,500 unreserved bench seats, 3,000 in the enclosure and 36,500 on the terraces.

**Season-tickets:** All £18 season-tickets have been sold. There are a limited number still available at £9, £12 and £15 (including F.A. Cup tickets). Season-ticket holders for 1965-66 will have first choice of seats in the new West Stand next season.

**Newcomers:** We welcome to our professional staff four players signed since the end of last season. They are two young Scots, **Pat Purcell**, a 17-year-old forward from Bonnyrigg Rose, and **Tommy Hughes**, 18-year-old goalkeeper from Clydebank Juniors; and two 17-year-old Londoners who were with us as apprentices last season — outside-right **Mick Vowles**, from Leyton, and full-back **Frank Conboy**, from Marylebone. Among our new apprentices are two Australian boys, **Ernie Campbell** and **Colin Miner**, both 15 and "spotted" by Tommy Docherty on the summer tour. Welcome to England, London and Chelsea, lads!



**Handbook:** The Chelsea F.C. Handbook, in its changed format, was so well received last year that we are again incorporating it as a programme supplement. Please note that it will be on sale at the match against Everton on Saturday, September 11. Be sure to get your 32-page double-size programme (Handbook included) that day, price one shilling.

\* \* \*

**Morning matches:** An 11 a.m. kick-off has been arranged for our first two Football Combination fixtures of the season. These are the home games against Fulham next Saturday and Arsenal the following Saturday, September 4. The reason is that on those days we also meet Fulham and Arsenal respectively in away League matches.

\* \* \*

**Flat wanted:** Centre-half Allan Young is looking for a flat in North London. Would any supporter possibly able to help be good enough to contact the Club?

\* \* \*

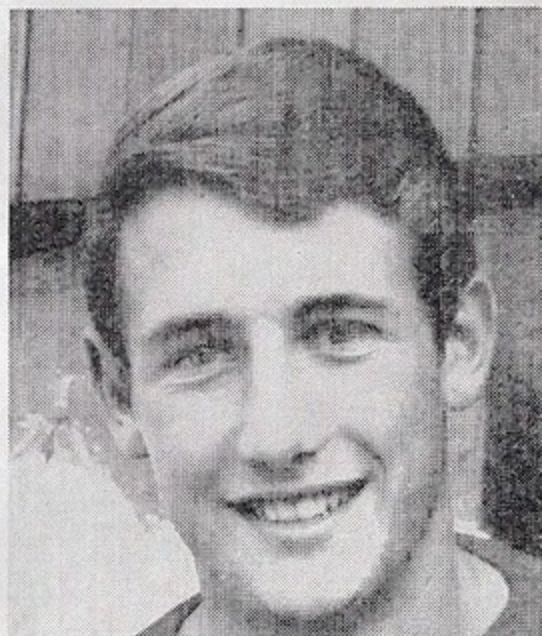
**It's your space:** Have YOU something to say — an opinion, a criticism, a suggestion — or a question to ask about football in general or Chelsea in particular? Last season's popular programme feature "In Off The Post" is to be continued, and we look forward to hearing from you. Letters (not more than 150 words) should be addressed to: "In off the Post", Chelsea F.C., Fulham Road, London, S.W.6.

#### SUBSTITUTES

The Football League, in a memorandum to all Clubs, Referees and Linesmen, emphasise the following points for clarification of the new regulation permitting substitutes, in order that there should not be any misunderstanding as to its operation:

1. The decision to substitute a player because of injury is a matter entirely for the official in charge of the team concerned, but the name of the player to be used as a substitute must be made known before the match commences, in exactly the same manner as the team.
2. Referees are asked to ensure that the substitution only takes place when the game is stopped, and they have confirmed from the captain that an injured player is unable to take any further part in the game and is to be replaced by the nominated substitute.
3. Once a team has made a substitution they cannot make any further substitution in the same match.
4. No substitution is allowed in the case of a player dismissed from the field by the referee.

## NEW FACES No. 1



**JIM BARRON**

Was transferred from Wolves in April after nearly four years at Molineux. Durham born, he is 21 and stands just under 6 ft. Made eight League appearances for Wolves. A Chelsea choice on three overseas trips — as a guest in West Indies in 1964 (when Wolves were there with us) and this summer in Australia and Europe. Welcome to Stamford Bridge, Jim.

#### AND NOW WE'RE OFF AGAIN . . .

Our match against West Germany's international team at Essen on Tuesday brought the total of first-team fixtures we have completed since the opening day of last season to 77, with the following analysis:—

	P	W	D	L	Goals	
					F	A
Football League	42	24	8	10	89	54
F.A. Cup	5	4	0	1	11	4
League Cup	9	6	3	0	21	9
Benfica	1	0	0	1	2	4
W. Germany (1964-65)	1	1	0	0	1	0
Australian Tour	11	9	2	0	47	7
European Tour	6	2	2	2	13	6
Glasgow Charity Cup	1	1	0	0	3	0
W. Germany (1965-66)	1	0	0	1	2	3
<b>Total</b>	<b>77</b>	<b>47</b>	<b>15</b>	<b>15</b>	<b>189</b>	<b>87</b>

#### ENGLAND AMATEURS HERE

On Monday, September 6th, we shall be fielding an eleven here against the England Amateur International team, kick-off 7.30 p.m.



# Around the World with the Chelsea Globe-trotters

## AUSTRALASIAN TOUR

Saturday, 8th May.  
 Sydney: Beat NEW SOUTH WALES 5-0. (Tambling 2, Upton, Osgood, Murray.)  
 Wednesday, 12th May.  
 Canberra: Beat COMBINED XI 7-0. (Graham 3, Osgood, Tambling, Boyle, Hollins.)  
 Saturday, 15th May.  
 Newcastle: Beat NORTHERN NEW SOUTH WALES 6-2. (Osgood, Harris, Murray, Graham, Venables, Opponent.)  
 Sunday, 16th May.  
 Melbourne: Beat VICTORIA 1-0. (McCalliog.)  
 Wednesday, 19th May.  
 Perth: Beat WESTERN AUSTRALIA 6-1. (Tambling 3, Mortimore, Graham, McCalliog.)  
 Saturday, 22nd May.  
 Adelaide: Beat SOUTH AUSTRALIA 2-1. (Osgood, Opponent.)  
 Sunday, 23rd May.  
 Sydney: Drew with AUSTRALIAN SELECT XI 2-2. (Osgood, Upton.)  
 Wednesday, 26th May.  
 North Hobart: Beat TASMANIA 12-0. (Osgood 5, Bridges 3, Smart 2, Boyle, Docherty—penalty.)  
 Sunday, 30th May.  
 Melbourne: Drew with AUSTRALIAN WORLD CUP XI 1-1. (Bridges.)  
 Wednesday, 2nd June.  
 Wollongong: Beat SOUTH COAST XI 1-0. (Osgood.)  
 Sunday, 6th June.  
 Brisbane: Beat QUEENSLAND 4-0. (Graham 2, Osgood, Opponent.)  
 Goalscorers: Osgood 12, Graham 7, Tambling 6, Bridges 4, Boyle 2, McCalliog 2, Murray 2, Smart 2, Upton 2, Docherty 1, Harris 1, Hollins 1, Mortimore 1, Venables 1, Opponents 3.  
 The following 20 players went on tour: Barron, Bonetti, Boyle, Fascione, Graham, Harris, Hinton, Hollins, Houseman, McCalliog, Mortimore, Murray, Osgood, Sinclair, Shellito, Smart, Tambling, Thomson, Upton, Venables.

## FINAL PLACINGS LAST SEASON

		HOME					Goals					AWAY					Goals					
	P	W	D	L	F	A	P	W	D	L	F	A	P	W	D	L	F	A	Pts			
Man. Utd.	42	16	4	1	52	13	10	5	6	37	26	61										
Leeds Utd.	42	16	3	2	53	23	10	6	5	30	29	61										
CHELSEA	42	15	2	4	48	19	9	6	6	41	35	56										
Everton	42	9	10	2	37	22	8	5	8	32	38	49										
Nottm. For.	42	10	7	4	45	33	7	6	8	26	34	47										
Tottenham	42	18	3	0	65	20	1	4	16	22	51	45										
Liverpool	42	12	5	4	42	33	5	5	11	25	40	44										
Sheff. Wed.	42	13	5	3	37	15	3	6	12	20	40	43										
West Ham	42	14	2	5	48	25	5	2	14	34	46	42										
Blackburn	42	12	2	7	46	33	4	8	9	37	46	42										
Stoke City	42	11	4	6	40	27	5	6	10	27	39	42										
Burnley	42	9	9	3	39	26	7	1	13	31	44	42										
Arsenal	42	11	5	5	42	31	6	2	13	27	44	41										
West Brom.	42	10	5	6	45	25	3	8	10	25	40	39										
Sunderland	42	12	6	3	45	26	2	3	16	19	48	37										
Aston Villa	42	14	1	6	36	24	2	4	15	21	58	37										
Blackpool	42	9	7	5	41	28	3	4	14	26	50	35										
Leicester	42	9	6	6	43	36	2	7	12	26	49	35										
Sheff. Utd.	42	7	5	9	30	29	5	6	10	20	35	35										
Fulham	42	10	5	6	44	32	1	7	13	16	46	34										
Wolves	42	8	2	11	33	36	5	2	14	26	53	30										
Birmingham	42	6	8	7	36	40	2	3	16	28	56	27										

## EUROPEAN TOUR

### GERMANY

Tuesday, 27th July.  
 Drew with V.F.B. STUTTGART 1-1.  
 Team: Bonetti; Shellito, McCreadie; Boyle, Hinton, Harris; Murray, Graham, Bridges, Venables, Tambling.  
 Scorer: Graham.  
 Friday, 30th July.  
 Beat HAMBURG S.V. 2-0.  
 Team: Bonetti; Shellito, McCreadie; Hollins, Hinton, Harris; Murray, McCalliog, Bridges, Venables, Tambling.  
 Scorers: McCalliog, Murray.

### SWEDEN

Sunday, 1st August.  
 Lost to GOTHENBURG ALLIANCE 2-4.  
 Team: Bonetti; Hinton, McCreadie (Upton); Hollins, Mortimore, Harris; Murray, Graham, Osgood, Venables, Houseman.  
 Scorers: Osgood, Graham.  
 Tuesday, 3rd August.  
 Beat ÖREBRO S.K. 8-0.  
 Team: Bonetti; Shellito, McCreadie; Hollins, Hinton, Harris; Boyle, McCalliog, Bridges, Venables, Tambling.  
 Scorers: McCalliog 3, Tambling 3, Boyle, Hollins.

### THURSDAY, 5th August.

Lost to I.F.K. NORRKÖPING 0-1.  
 Team: Bonetti; Shellito, McCreadie; Hollins, Hinton, Harris; Boyle, McCalliog, Bridges, Venables, Tambling.

### DENMARK

Sunday, 8th August.  
 Drew with AARHUS 0-0.  
 Team: Bonetti; Shellito, McCreadie; Hollins, Young, Harris; Murray (Boyle), Graham, Bridges, McCalliog, Tambling.

Tour party (20): Barron, Bonetti, Boyle, Bridges, Graham, Harris, Hinton, Hollins, Houseman, McCalliog, McCreadie, Mortimore, Murray, Osgood, Shellito, Smart, Tambling, Upton, Venables, Young.

### GLASGOW CHARITY CUP

Wednesday, 11th August (at Hampden Park).  
 Beat GLASGOW SELECT XI 3-0 (Half-time: 0-0).  
 Glasgow: McCulloch (Clyde); Johansen (Rangers), Gemmell (Celtic); Murdoch (Celtic), McNeill (Celtic), Greig (Rangers); Hughes (Celtic), McLean J. (Clyde), Forrest (Rangers), McLean, G. (Rangers), McParland (Partick).  
 Chelsea: Bonetti; Shellito, Harris; Hollins, Hinton, Boyle; Bridges, McCalliog, Graham, Venables, Tambling.  
 Scorers: Tambling 2, Graham.  
 Attendance: 36,641.

### FINAL PRE-SEASON MATCH

Tuesday, 17th August (at Essen).  
 Lost to WEST GERMANY 2-3 (Half-time: winning 2-0).  
 Team: Bonetti; Shellito, McCreadie; Hollins, Hinton, Harris; Boyle, McCalliog, Bridges, Venables, Tambling.  
 Scorers: Bridges, McCalliog.



## WE START THE SEASON WITH A TROPHY:



Is it or isn't it? Terry Venables' shot beats Glasgow goalkeeper McCulloch and left-half Greig but goes about a foot wide.



Our first goal. Left-back Gemmell wears a "how did that get there?" expression as Bobby Tambling's floater from the dead-ball line finishes in the net.



## 3-0 CHARITY CUP WIN AT HAMPDEN PARK



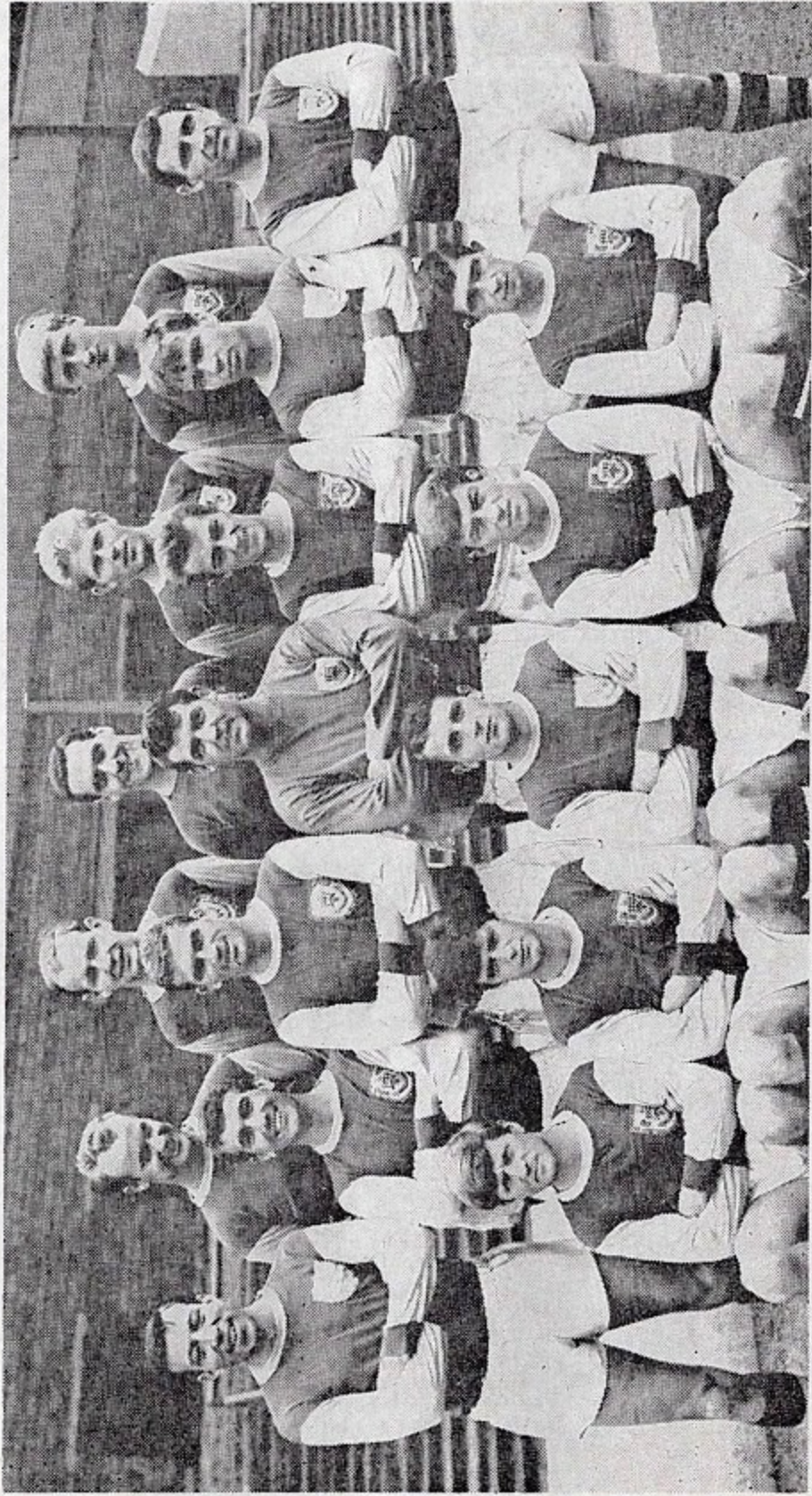
George Graham rises to a corner, but McCulloch snatches the ball off his head.



Another Tambling corner, this time Graham's head connects... and it's the second goal towards our 3-0 Glasgow Charity Cup victory.



## BURNLEY 1965-66



*Back row (left to right): G. Harris, A. Lochhead, H. Thomson, R. Pointer, S. Todd.  
Centre: J. Talbut, B. O'Neil, B. Miller, A. Blacklaw, A. Bellamy, A. Elder, J. Angus.  
Front: I. Towers, W. Morgan, W. Irvine, R. Coates, F. Smith.*



# CHELSEA

Colours—Shirts: Royal Blue. Shorts: Royal Blue. Stockings: White.

(Goal)

**BONETTI**

1

(Right-back)

**SHELLITO**

2

(Left-back)

**McCREADIE**

3

(Right-half)

**HOLLINS**

4

(Centre-half)

**HINTON**

5

(Left-half)

**HARRIS**

6

(Outside-right)

**BOYLE**

7

(Inside-right)

**McCALLIOG**

8

(Centre-forward)

**BRIDGES**

9

(Captain)  
(Inside-left)

**VENABLES**

10

(Outside-left)

**TAMBLING**

11

Referee:

Mr. K. H. BURNS (Dudley)

Linesmen:

Mr. R. D. Hastie (Banbury)

(Red Flag)

Mr. C. W. Northrop (Faversham)

(Yellow Flag)



DECLARED SUBSTITUTES

CHELSEA: **GRAHAM**

BURNLEY: **TODD**

11

**COATES**

(Outside-left)

10

**BELLAMY**

(Inside-left)

9

**IRVINE**

(Centre-forward)

8

**LOCHHEAD**

(Inside-right)

7

**MORGAN**

(Outside-right)

6

**MILLER**

(Left-half)

5

**TALBUT**

(Centre-half)

4

**O'NEIL**

(Right-half)

3

**ELDER**

(Left-back)  
(Captain)

2

**ANGUS**

(Right-back)

1

**THOMSON**

(Goal)

# BURNLEY

Colours—Shirts: Claret and Light Blue. Shorts: White.

Stockings: Claret and Blue Hoops.

(Playing today in White Shirts, White Shorts, Claret and Blue Stockings).

9



## Introducing WORLD CUP WILLIE



whose bulletins from his White City lair will be published at frequent intervals in our programme this season to keep you up to date with news of the progress and organisation of Britain's greatest soccer spectacular.

**E**LEVEN months to go before the opening of the World Cup Final Series in England in July 1966, and already the indications are that it will be among the most successful ever staged.

At a comparable period of preparation for the last series in Chile in 1962, ticket sales had not begun. Already, however, the World Cup Organisation reports £200,000 in ticket sales safely in the bank.

The interest already shown in the competition from more than 100 countries — not to mention growing enthusiasm at home for what will almost certainly be the only occasion the competition will be staged in this country in the lifetime of most of those who will be able to watch it — indicates that intending ticket purchasers should make their applications promptly.

By the time the draw is made in London in January, and the groups to which the 16 competing countries will be allocated are known, overseas sales will have reached such proportions that British soccer enthusiasts who have not made up their minds in good time will probably find themselves unable to obtain the grade of tickets they require.

Applications for ten-match season-tickets, which include a semi-final, the third and fourth place final, and the Final, should be made to the World Cup Organisation at White City, London W.12. Applications for season-tickets in the lesser categories should be made direct to the grounds where the games will take place.

## HE'S IN CHARGE

**M**R. KENNETH BURNS, from Dudley, Worcestershire, is today starting his fifth season on the Football League list of referees.

Aged 34, he previously officiated in the Birmingham & District and Wolverhampton Amateur leagues.

Mr. Burns is a solicitor's managing clerk. Away from football, his sporting interests are cricket — he plays for Old Hill in the Birmingham League — and snooker.

### Chelsea v. Burnley Past League Results

Season	Home	Away	Season	Home	Away
1905-06	1-0	0-2	1950-51	0-2	1-2
1906-07	2-0	1-1	1951-52	4-1	1-1
1910-11	3-0	1-1	1952-53	0-2	1-1
1911-12	0-2	2-2	1953-54	2-1	2-1
1913-14	0-0	1-6	1954-55	1-0	1-1
1914-15	1-4	0-2	1955-56	0-0	0-5
1919-20	0-1	3-2	1956-57	2-0	0-2
1920-21	1-1	0-4	1957-58	6-1	1-2
1921-22	4-1	0-5	1958-59	1-3	0-4
1922-23	0-1	0-1	1959-60	4-1	1-2
1923-24	3-2	0-2	1960-61	2-6	4-4
1947-48	0-2	0-1	1961-62	1-2	1-1
1948-49	1-0	0-3	1963-64	2-0	0-0
1949-50	0-1	2-1	1964-65	0-1	2-6

(Chelsea's score given first in each case)

### Summary

	P	W	D	L	F	A	Pts.
Home	...	...	28	13	3	12	41
Away	...	...	28	3	9	16	25
Total	...	...	56	16	12	28	66

## FRONT COVER SHOT

**F**OOTBALL'S first cup-winners of 1965-66. Our team line up at Hampden Park before beating the Glasgow Select XI 3-0 in a match for the Glasgow Charity Cup.

Back row: John Hollins, Marvin Hinton, Peter Bonetti, John Boyle, Ron Harris, Ken Shellito.

Front: Barry Bridges, George Graham, Terry Venables, Bobby Tambling, Jim McCalliog.



# John Mortimore Testimonial Fund

CHELSEA F.C. 1955-65

c/o Stamford Bridge, Fulham Road, S.W.6

*Committee:* T. Beattie-Edwards (Chairman), T. Barry,  
Miss C. Mathews (Sec.)

Co-opted Representatives of Season Ticket Holders: Terrace Fans:  
Supporters Club-Development Association

## John Mortimore writes . . .

**Y**OU will see from the heading above that the Chairman and Directors of the Club have given me the fullest co-operation in arranging my Testimonial.

I know how well you supported Frankie Blunstone last year and how much he and his family appreciated your generosity. I only hope that I will be as lucky as Frank.

I am compiling a brochure similar to Frank's and I hope that every supporter will want one. Each copy will have a number and on the night of the match a lucky number will be drawn and the winner will be invited to be my guest at an away League or F.A. Cup match of his choice.

The main feature of my Testimonial year will be a football match to be played at Stamford Bridge in either October or November, kick-off 7.30 p.m. I hope to be able to arrange for Chelsea to play against Rangers, Celtic, Hearts or a Select Scottish XI. The match will be at normal League prices.

Woking F.C. are also arranging a match for me on a date to be agreed upon.

In conclusion I would like to thank those people who have already sent a donation.

Many thanks indeed for your anticipated support.

Yours truly,  
*John Mortimore*

## JUNIOR FIXTURES SOUTH-EAST COUNTIES LEAGUE

### SENIOR DIVISION

1965	Opponents	Venue	F. A.
Aug. 21	FULHAM	... Hendon	.....
" 28	Queen's Park Rangers	... Away	.....
Sept. 4	WEST HAM UNITED	... Hendon	.....
" 11	BRIGHTON & H.A.	... Hendon	.....
" 18	Crystal Palace	... Away	.....
Oct. 2	LUTONTOWN	... Hendon	.....
" 9	Bexley	... Away	.....
" 16	QUEEN'S PARK R.	... Hendon	.....
" 23	Watford	... Away	.....

### JUNIOR DIVISION

1965	Opponents	Venue	F. A.
Aug. 28	WATFORD (Cup)	... Hendon	.....
Sept. 4	West Ham United (Cup)	... Away	.....
" 11	Millwall (Cup)	... Away	.....
" 18	CRYSTAL PAL. (Cup)	... Hendon	.....
Oct. 9	MILLWALL	... Hendon	.....
" 16	Bexley (Cup)	... Away	.....
" 23	BEXLEY	... Hendon	.....



# FOR THE RECORD:

For the benefit of those who keep a record of all Chelsea matches, here is the "last round up" of 1964-65—summaries of games played after publication of our final programme last season.

## FOOTBALL LEAGUE

Good Friday, 16th April.  
Beat LIVERPOOL (Home) 4-0. Half-time: 2-0.  
Chelsea—Bonetti; Hinton, McCreadie; Hollins, Mortimore, Harris; Murray, Graham, Bridges, Venables, Tambling.  
Scorers: Tambling, Hinton, Murray 2.  
Liverpool—Lawrence; Lawler, Byrne; Milne, Yeats, Stevenson; Callaghan, Hunt, St. John, Smith, Thompson.  
Referee: Mr. K. Stokes (Newark).  
Attendance: 62,587.

Saturday, 17th April.  
Drew with WEST BROMWICH ALBION (Home) 2-2.  
Half-time: 2-2.

Chelsea—Bonetti; Hinton, Harris; Hollins, Mortimore, Boyle; Murray, Graham, Bridges, Venables, Tambling.

Scorers: Murray, Tambling.  
W.B.A.—Potter; Cram, Williams (G.); Howshall, Jones, Fraser; Foggo, Astle, Crawford, Hope, Carter.

Scorers: Crawford, Howshall.  
Referee: Mr. G. D. Roper (Cambridge).  
Attendance: 30,792.

Monday, 19th April.  
Lost to LIVERPOOL (Away) 0-2. Half-time: 0-2.  
Liverpool—Lawrence; Lawler, Byrne; Smith, Yeats, Stevenson; Graham (R.), Hunt, Strong, Chisnall, Thompson.  
Scorers: Chisnall, Strong.

Chelsea—Bonetti; Hinton, McCreadie; Hollins, Mortimore, Harris; Murray, Graham (G.), Bridges, Venables, Tambling.  
Referee: Mr. A. W. Luty (Leeds).  
Attendance: 41,847.

Saturday, 24th April.  
Lost to BURNLEY (Away) 2-6. Half-time: 1-4.  
Burnley—Thomson; Elder, Buxton; O'Neil, Merrington, Miller; Morgan, Lochhead, Irvine, Harris (G.), Coates.

Scorers: Lochhead 5, Irvine.  
Chelsea—Bonetti; Shellito, Harris (R.); Sinclair, Mortimore, Boyle; Smart, Tambling, Upton, McCalliog, Houseman.  
Scorers: Harris, Houseman.  
Referee: Mr. G. McCabe (Sheffield).  
Attendance: 15,215.

Monday, 26th April.  
Lost to BLACKPOOL (Away) 2-3. Half-time: 1-2.  
Blackpool—Walters; Armfield, Thompson; McPhee, James, Green; Moir, Ball, Charnley, Lea, Horne.  
Scorers: Charnley 3.

Chelsea—Bonetti; Hinton, Harris; Hollins, Mortimore, Upton; Murray, Graham, Bridges, Venables, Tambling.  
Scorers: Tambling, Mortimore.  
Referee: Mr. R. H. Windle (Chesterfield).  
Attendance: 16,008.

## OTHER MATCH

(John Hewie's Testimonial)

Thursday, 29th April.  
Beat CHARLTON (Away) 3-2.  
Team: Barron; Shellito, Harris; Upton, Hinton, Boyle; Fascione, McCalliog, Graham, Venables, Houseman.  
Scorers: Venables, McCalliog, Graham.  
Attendance: 11,800. Receipts: £2,156.

## FOOTBALL COMBINATION

Wednesday, 14th April.  
Beat COLCHESTER UNITED (Home) 5-0.  
Team: Dunn; Watson, Jones; Gould, Upton, Boyle; Fascione, Tambling, Graham, McCalliog, Harmer.  
Scorers: McCalliog 2, Watson, Gould, Tambling.  
Saturday, 24th April.  
Beat NORWICH CITY (Away) 3-0.  
Team: Dunn; Henderson, Jones; Thomson, Watson, F. Conboy; M. Vowles, Gould, B. Lloyd, Harmer, J. Hudson.  
Scorers: Lloyd 2, Gould.

## SOUTH-EAST COUNTIES LEAGUE CUP FINAL

First Leg  
Tuesday, 27th April.  
Beat MILLWALL (Home—Stamford Bridge) 2-1.  
Team: R. Willis; Henderson, F. Conboy; Sinclair, Thomson, Boyle; M. Vowles, Wilks, Osgood, McCalliog, Smart.  
Scorers: Sinclair, Boyle.  
Second Leg  
Friday, 30th April.  
Beat MILLWALL (Away—The Den) 2-0.  
Team: R. Willis; Henderson, F. Conboy; Sinclair, Thomson, Boyle; M. Vowles, B. Lloyd, Wilks, McCalliog, Smart.  
Scorers: Smart, Boyle.  
(Chelsea won 4-1 on aggregate.)

## SOUTH-EAST COUNTIES LEAGUE (Senior Division)

Thursday, 22nd April.  
Lost to CRYSTAL PALACE (Away) 0-2.  
Team: R. Willis; Henderson, F. Conboy; H. Wingrove, Thomson, R. Howlett; M. Vowles, A. Briant, Wilks, B. Lloyd, B. Brown.  
Saturday, 24th April.  
Lost to PORTSMOUTH (Home—Hendon) 0-3.  
Team: R. Willis; V. Coates, K. Brewer; H. Wingrove, J. Scott, P. Fry; B. Brown, G. Adams, R. Smee, A. Harley, J. Knox.  
Saturday, 1st May.  
Lost to WEST HAM UNITED (Away) 0-7.  
Team: W. Snaddell; Henderson, F. Conboy; H. Wingrove, Thomson, R. Howlett; J. Wilson, G. Adams, B. Lloyd, K. Brewer, Smart.

## SOUTH-EAST COUNTIES LEAGUE (Junior Division) CUP

Saturday, 24th April.  
Beat BEXLEY UNITED (Home—Hendon) 10-2.  
Team: W. Snaddell; J. Smith, R. Cavanagh; H. Wingrove, D. Bower, P. Fry; T. Waughman, B. Brown, D. Shepherd, A. Harley, M. Wilson.  
Scorers: Brown 3, Waughman 2, Shepherd 2, Wingrove 2, Wilson.  
Wednesday, 28th April.  
Beat LEYTON ORIENT (Home—Hendon) 3-1.  
Team: W. Snaddell; J. Smith, M. Birch; H. Wingrove, D. Bower, P. Fry; T. Waughman, A. Harley, R. Smee, J. Hudson, J. Wilson.  
Scorers: Harley 2, Smee.

Commentaries on all first team matches are relayed to local hospitals by members of Chelsea T.O.C.H.



## ABOUT OUR VISITORS

**W**HEN Scottish international goalkeeper **Adam Blacklaw** was omitted from Burnley's team late last season, his absence halted a wonderful run of 194 consecutive appearances in League and Cup games, at a total of 268 League outings since his debut in December 1956. His place was taken by **Harry Thomson**, a relative of Everton's Alex Young and a native of Edinburgh, who joined Burnley straight from school. Thomson played in the last eight games of the season, but whether he will become Burnley's regular choice remains to be seen.

There is also keen competition in prospect for the right-back position. England cap **John Angus** was a regular until injury cost him his place last October, after which **Fred Smith** and **Sammy Todd** shared the position. Todd, a former Irish Youth international wing-half from Belfast, is starting his third season as a professional at Turf Moor. Smith, a native of West Sleekburn, joined Burnley on leaving school, and made his League debut two years ago.

The regular half-back line, except when injuries intervened, was **Brian O'Neil**, **John Talbut**, and **Brian Miller**. O'Neil, another of the many north-easterners on the Burnley staff who joined the club straight from school, made his League debut three years ago and has developed into a most consistent player.

Although born near Oxford, Talbut also joined Burnley from the north-east, having been brought up in Durham. His League debut was in December 1958, and he has been a regular choice for the past three seasons. Left-half Miller is one of

only two Burnley-born players on the staff, which he joined ten years ago. His League debut was in February 1956, and he has made 298 League appearances, playing in all three half-back positions and occasionally at full-back.

Last winter inside-right **Andy Lochhead** (21 goals) and centre-forward **Bill Irvine** (22) raced neck and neck for the title of Burnley's leading First Division marksman. Lochhead scored five of his goals in his club's final match — at our expense. A Scot from Renfrewshire, he joined Burnley six years ago, while Irvine, an Irish international from Carrickfergus, has been with them since leaving school.

Most regular choice on the right-wing was Scottish-born **Willie Morgan**, with **Ian Towers** and **John Price** (now Stockport County) mainly alternating at outside-left, where lesser-known players like **Leslie Latchman** and **Ralph Coates** also made occasional appearances.

### THEIR MANAGER

**HARRY POTTS** — Born at Hetton-le-Hole (Durham), he joined Burnley just before the war, and was their top scorer in three of the first four post-war seasons, playing at inside-forward. Was in their 1947 F.A. Cup Final team v. Charlton. Spent six years with Everton before becoming coach to Wolves in 1956. A year later was appointed manager of Shrewsbury Town and took over as Burnley manager in February 1958, succeeding Alan Brown who went to Sunderland.

**Gordon Harris**, the club's usual choice at inside-left, will be absent today as he started fourteen days' suspension on Monday.

**Arthur Bellamy**, yet another native of the north-east, is Burnley's general utility forward — last winter he occupied every position in attack except centre-forward. Apart from Irvine and Lochhead, no Burnley player totalled more than four goals last season, and the aggregate of 70 in League matches was the club's lowest since 1956-57, when they scored 56.



## GIVING OUR GROUND A NEW LOOK

IT is a popular fallacy that nothing happens at a football ground during the summer, but a glance around Stamford Bridge today will convince everyone that the Bridge has not been idle this year. The building of a huge stand cannot be done in a day, and in addition to the stand itself there are many other projects to be completed, such as new or altered entrances, ticket offices, etc.

The new West Stand, costing £130,000, will contain 6,000 tip-up reserved seats, and in front there will be a further 3,500 unreserved bench seats in the enclosure. Entry to them will be via transfer turnstiles from the terraces at each end of the West Stand. This transfer will replace the old transfer system at the rear of the North Stand (double-decker) which will in future be wholly reserved in advance.

### November Opening

Entry to the West Stand, when complete, will be through the Britannia entrance, making use of eight turnstiles at present shut. It is intended that the Stand will be open by early November, with all seats bookable in advance. Next year it is hoped to build a new and separate entrance to the West Stand.

For the remainder of this season at least, supporters paying 4/- at the Britannia entrance will have to go to the far (North Stand) end of the ground to stand - they will NOT be able to get from the Britannia entrance to the Fulham Road end direct as in the past. Those wishing to stand at the Fulham Road end should use either the Bovril or Main Entrances.

It is no longer possible to get to the 4/- ground turnstiles through the ticket-holders' entrance on the railway bridge. This gate now admits only to the ticket-holders' turnstiles and the ticket office. So unless you are a ticket-holder or are calling at the ticket-office, enter by the Main Gate. We have also altered the position of the boys' stiles at the Main Entrance so that they are next to the ticket-holders' stiles. This will leave a block of 16 stiles solely for 4/- admission,

and will avoid the danger of small boys getting involved in a large crowd outside the stiles.

It would be idle to pretend that the arrangements for entry to the ground today are ideal, and some supporters of long standing will find that their usual spots will be inaccessible. We do, however, hope that supporters will bear with us while temporary arrangements are in force; rest assured that work is proceeding as fast as possible within the limits of finance and weather. We must also apologise for the inadequate refreshment and toilet facilities in certain parts of the ground and again can only ask for your indulgence during this transitional period.

The task of converting Stamford Bridge into a first-class modern stadium will not be accomplished quickly, but a start has been made and with your help - with tolerance of temporary inconveniences on match days and by regular support through the Development Association - we hope that we shall soon have a stadium of which we can all be proud. To summarise:-

**MAIN ENTRANCE:** Ticket-holders' Gate - East and North Stand ticket-holders, or intending ticket-purchasers; Main Gate - East and North Stand ticket-holders, intending ticket-purchasers, Ground admission (including boys) to Fulham Road end or North end through arcade.

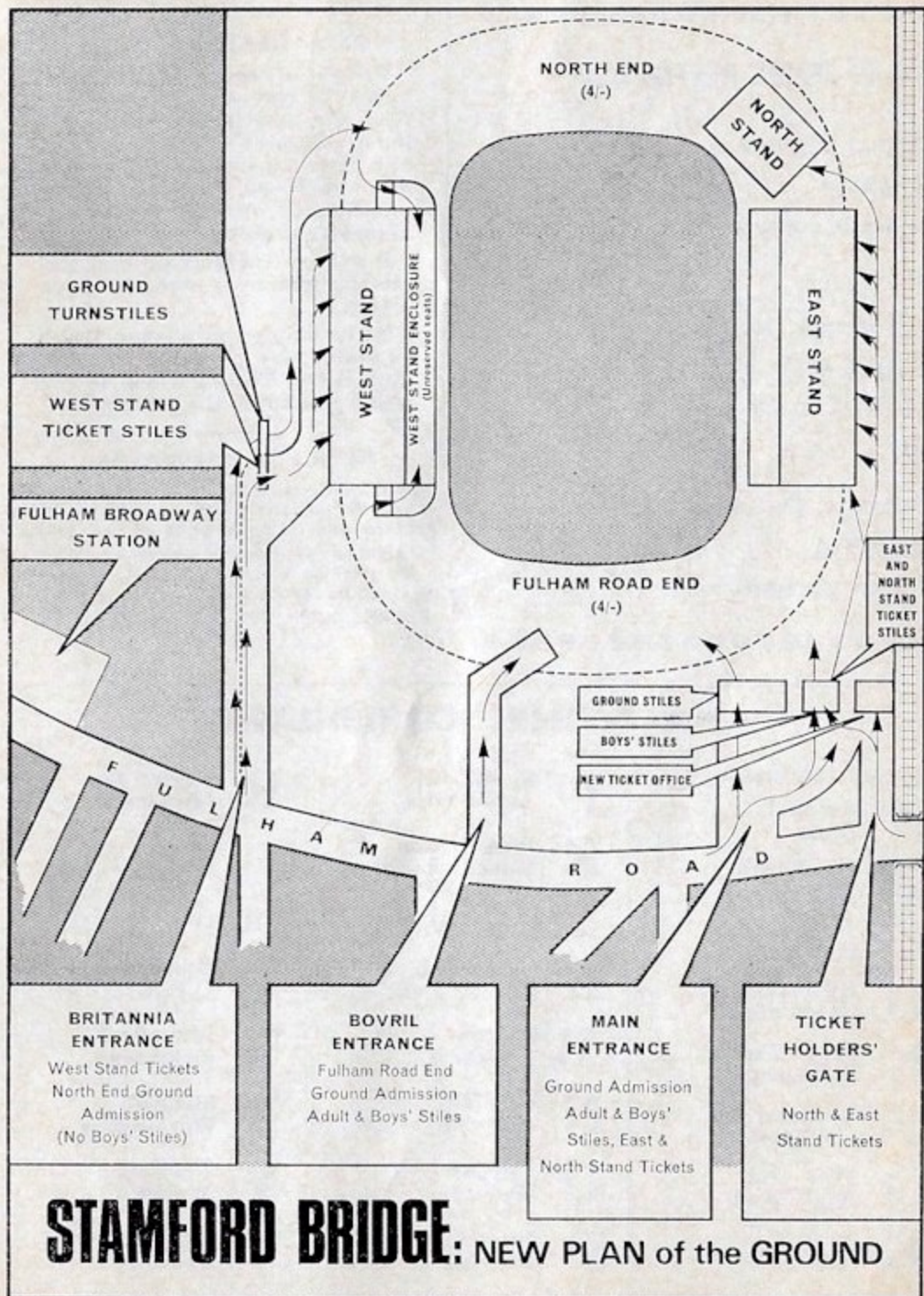
**BOVRIL ENTRANCE:** Ground admission (including boys) to Fulham Road end only.

**BRITANNIA ENTRANCE:** Ground admission (no boys' stiles) to North end only, and West Stand ticket-holders when Stand is open.

### F.A. DIARY

The F.A. Diary for 1965-66 is now on sale, and can be obtained, price 4/6 (including postage), from the Football Association, 22 Lancaster Gate, London W.2.







## NEXT HOME MATCHES

Saturday, 28th August (11 a.m.)

**FULHAM**

FOOTBALL COMBINATION

Wednesday, 1st September (7.30 p.m.)

**STOKE CITY**

FOOTBALL LEAGUE

Saturday, 4th September (11 a.m.)

**ARSENAL**

FOOTBALL COMBINATION

## SEAT RESERVATIONS

Prices of reserved seats at home League matches are 7/6, 10/6, 12/6 and 15/6. Applications (by post only) will be accepted one calendar month in advance, and should be accompanied by remittance and stamped addressed envelope.

It will be appreciated if separate application is made for each match.

Seats may be purchased, if still available, by personal application at the Ticket Office in the week preceding the match.

## NOTICE TO SPECTATORS

We draw the attention of spectators to our Ground Regulations which are posted at the turnstiles and in other parts of the ground.

We must emphasise that anyone apprehended on the pitch or causing a disturbance in the crowd will be removed from the stadium.

PLEASE KEEP OFF THE PITCH AT ALL TIMES.

## HALF-TIME SCOREBOARD

### FIRST DIVISION

<b>A</b>	Arsenal	.....
	Stoke	.....
<b>B</b>	Blackburn	.....
	Tottenham	.....
<b>C</b>	Blackpool	.....
	Fulham	.....
<b>D</b>	Everton	.....
	North'pton	.....
<b>E</b>	Leeds Utd.	.....
	Sunderland	.....
<b>F</b>	Leicester	.....
	Liverpool	.....
<b>G</b>	Man. Utd.	.....
	Sheff. Wed.	.....
<b>H</b>	Newcastle	.....
	Nott'm. F.	.....

<b>J</b>	Sheff. Utd.	.....
	Aston Villa	.....
<b>K</b>	West Brom.	.....
	West Ham	.....

### SECOND DIVISION

<b>L</b>	Birm'ham	.....
	Crystal Pal.	.....
<b>M</b>	Bolton	.....
	Charlton	.....
<b>N</b>	Carlisle	.....
	Norwich	.....
<b>O</b>	Coventry	.....
	Wolves	.....
<b>P</b>	Ipswich	.....
	Preston	.....

<b>R</b>	Leyton Or.	.....
	Huddersfield	.....

### THIRD DIVISION

<b>S</b>	Brentford	.....
	Q.P.R.	.....
<b>T</b>	Mansfield	.....
	Brighton	.....
<b>U</b>	Millwall	.....
	Workington	.....
<b>V</b>	Reading	.....
	Watford	.....
<b>W</b>	Swindon	.....
	Oxford	.....