

Season 1972-73



FOOTBALL LEAGUE DIVISION ONE

Saturday 14 October

West Bromwich Albion

Kick off 3 pm



OFFICIAL PROGRAMME 5p

More agents and members

Bigger prizes

Better facilities

Chelsea Pools

All profits go towards the Stamford Bridge Redevelopment Programme

Licensed for 1972-73 under Gaming Board for Great Britain Pool Competitions Act, 1971, Section 2.

Committee:

- MR. J. B. MEARS (Chairman)
- VISCOUNT CHELSEA
- MR. L. J. MEARS
- MR. G. M. THOMSON
- MR. R. S. ATTENBOROUGH, C.B.E.
- MR. D. SEXTON

Organiser and Secretary:

MR. GEOFF ABEL

CHELSEA F.C. POOLS ASSOCIATION

STAMFORD BRIDGE GROUNDS
FULHAM ROAD, LONDON SW6 1HS

01-385 3255

WANTED

AGENTS FOR THE CHELSEA BIG POOL

BY becoming a Chelsea Pools Agent you will be helping to build the new Stamford Bridge Stadium.

You will also be helping yourself to all the benefits that go with being a Chelsea Pools Agent:

- If you sell 100 or more tickets per week, you receive a Chelsea Centurion Pass bringing you free admission to all home League matches.
- 12½p in every £ commission.
- 5% bonus on all winning tickets you sell.
- Weekly Agents' draw with Premium Bond prizes.
- Free Tickets to certain home matches.

Please sign form and return—or if you do not want to cut your programme write for details to:

Chelsea F.C. Pools Association, Stamford Bridge Grounds, Fulham Rd, SW6 1HS

I would like to help Chelsea Football Club by acting as an Agent for the "Chelsea Big Pool". Please send me details. I am over 18.

Name..... (Mr./Mrs./Miss)

Address

.....

..... County.....

I estimate I shall require.....tickets for members.

Chelsea

Colours:
 Shirts: Royal Blue.
 Shorts: Royal Blue with
 White Seam.
 Stockings: White



W.B.A.

Colours:
 Shirts: Navy Blue & White Stripes.
 Shorts: White.
 Stockings: Navy Blue with White
 Ringed Top.

(Playing today in Yellow Shirts)

PETER
BONETTI

GARY
LOCKE

EDDIE
McCREADIE (Capt.)

JOHN
HOLLINS

MICKY
DROY

RON
HARRIS

CHRIS
GARLAND

STEVE
KEMBER

PETER
OSGOOD

DAVID
WEBB

PETER
HOUSEMAN

1

2

3

4

5

6

7

8

9

10

11

Substitute

PETER
LATCHFORD

GORDON
NISBET

RAY
WILSON

LEN
CANTELLO

JOHN
WILE (Capt.)

ALISTAIR
ROBERTSON

COLIN
SUGGETT

TONY
BROWN

BOBBY
GOULD

ALISTAIR
BROWN

ASA
HARTFORD

Linesman (Red Flag):
Mr. J. B. Hazell
 (Colchester)

Referee:
Mr. DAVID LAING
 (Preston)

Linesman (Orange Flag):
Mr. A. C. Lines
 (Witham, Essex)

RESULT: CHELSEA..... W.B.A..... HALF-TIME.....

SCORERS:



CHELSEA FOOTBALL CLUB

(The Chelsea Football & Athletic Co., Ltd.)

Founded 1905

Registered Address

STAMFORD BRIDGE GROUNDS
FULHAM ROAD, LONDON SW6 1HS
(Tel: 01-385 5545)

PRESIDENT

The Right Hon. Earl Cadogan, M.C.,
D.L.

BOARD OF DIRECTORS

J. B. Mears (Chairman)
Viscount Chelsea (Vice-Chairman)
L. J. Mears
G. M. Thomson
R. S. Attenborough, C.B.E.

Secretary

Tony Green

Team Manager

Dave Sexton

Trainer

Harry Medhurst

Hon. Medical Officers

Dr. W. C. Marshall
Dr. J. Vyse

Financial Advisers

Dalton, Barton and Company Limited

COLOURS

Shirts: Royal Blue. Shorts: Royal Blue
with White Seam
Stockings: White

HONOURS

Football League Champions 1955
F.A. Charity Shield Winners 1955
Football League Cup Winners 1965
F.A. Cup Winners 1970
European Cup-Winners' Cup 1971
Won promotion to Div. I 1907, 1912,
1930, 1963
F.A. Youth Cup Winners 1960, 1961

The Talk of Stamford Bridge

"CLEARING a high hurdle", was how Dave Sexton aptly assessed Monday night's replay victory over Derby County which takes us into the last 16 of the Football League Cup. Once again an injury-hit Chelsea side did us proud, and while the report that summed up "Derby played the football, Chelsea got the goals" possibly over-simplified things, we must say we would have felt most unlucky to have played as well as the Champions did and failed to survive. But that does not detract from our own many splendid endeavours on a night on which we hope we shall have cause to look back with increasing satisfaction as the League Cup competition advances. That was our fourth successive match against Midlands opposition—Coventry, Derby, Birmingham and Derby again—and today's visit of West Bromwich stretches the sequence to five. Here's to another good result.

* * *

Casualty Corner

At the time of writing there are "possibilities" (we can put it no higher) about several players being available today who were ruled out on Monday. Among them are Chris Garland, who has played for most of the past month with a niggling groin injury; Micky Droy (thigh strain); and Bill Garner, whose ham-string has improved steadily. Peter Osgood played on Monday (how he played!) with three stitches in the right ankle from last Saturday. After Monday's match Peter Bonetti went home for a couple of days' rest with a touch of tonsillitis—he was sweating in more ways than one in that replay with Derby—and Alan Hudson, still recovering from ankle and calf injuries, is hit by throat trouble. Ian Hutchinson was seen giving a helping hand here on Monday night to John Phillips, who was walking on sticks because of a knee ligament injury. Tommy Baldwin has been alternating days of golf and light training this week—he hopes to start full training on Monday—but John Dempsey must wait another fortnight before his ankle comes out of plaster.

That was the nucleus of quite a Chelsea side we were unable to consider for

Monday's replay—Phillips, Droy, Dempsey, Hudson, Garland, Garner, Hutchinson and Baldwin. Dave Sexton will surely welcome the day when his selection problem is "whom to leave out" rather than the persisting one of "who's fit to put in?" Meanwhile, he keeps coming up with good answers!

* * *

Away to Bury

After beating Derby, we are away to Bury in the fourth round of the League Cup on Tuesday, October 31 (7.30 p.m.). Bury inform us that the match will not be all-ticket. Our allocation of seats, prices 65p, 60p, 55p and 50p, will be on general sale here as from Monday next.

* * *

At the Club Shop: Latest item on sale at the official Club Shop is the new Chelsea scarf in blue orlon with "Chelsea, The Blues" embroidered in white. The price is £1.30. Remember that when you buy from the Club Shop inside the ground prices are often much lower, quality much better, than outside, and you are sure of purchasing *genuine* souvenirs.

Front cover shot

WHAT a winner! Peter Osgood explodes our third goal of the night against Derby on Monday from Peter Houseman's immaculate cross. We doubt if Ossie has hit many more powerful shots in his life, and it would have been interesting to see how it compared in the "London Hot-Shots" competition currently being staged by the *Evening Standard*. Unfortunately, their shot-measuring equipment was not here on Monday, but Ossie brought along his net-stretching gear—that powerful right foot in which he still carried three stitches from last Saturday—and the *Daily Mirror's* ace football photographer Monte Fresco was here to capture this "Osgoal supreme." He also took the pictures of our other goals in the League Cup replay win—Steve Kember's below and David Webb's on the back page.



STEVE'S STUNNER

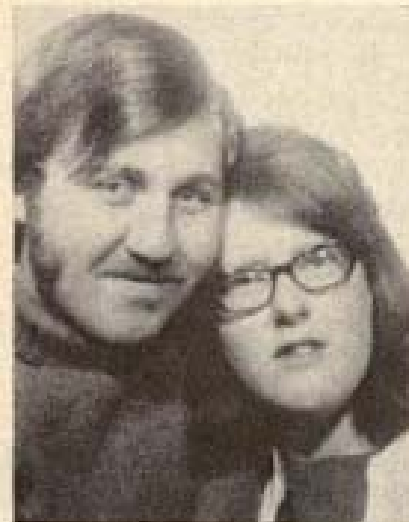
Steve Kember—what a good game he had again on Monday night—jumps for joy after firing us into a fifth-minute lead in the League Cup replay against Derby. And besides contributing so much hard work in midfield and doggedness in defence, he hit the post in the second half.

They'll Live in "The Shed!"

MARTIN Benson, of 45 High Street, Balsham, Cambs., wrote to us this week to say: I thought you might like to know that my brother, Ian, is getting married on Saturday, October 21, at St. Mary's, Cambridge. Both he and his fiancée, Janet, are keen Blues supporters, and have been coming to matches at Stamford Bridge for over five years.

Ian is 22 and works for a firm of chartered accountants in Cambridge. Janet, 25, works in

Barclays Bank, also in Cambridge. Of course, they still intend to watch Chelsea after they are married. Their new house is going to be called "The Shed."



I hope you can print this, please, as it will be a lovely present from you to them on the eve of their happy day.

Yours, Martin

Benson (brother and even keener supporter).

• *Delighted to print your letter, Martin—you sound like an up-and-coming journalist, the way you have packed in all the details—and from everyone at Chelsea (including our own Shed!) here's wishing Ian and Janet every happiness. We'll try to add to their joy next Saturday by doing our best to win at Tottenham.*

With Ian Hutchinson beginning his comeback campaign, our last two home Football Combination games have both been watched by more than 1,000 spectators. That's a high-water mark by modern attendance standards for Reserve games here—with 1,312 present for the game against Oxford two weeks ago and 1,119 against Birmingham last Saturday. We hope still more of our regular first-team patrons will develop the habit of coming to watch the Reserves. Next Saturday, for instance, you can see Chelsea against Spurs TWICE, because we meet them here in the Combination at 11 a.m. before the First Division clash at White Hart Lane.

FOLLOW THE BLUES ON THE "CHELSEA TRAIN"

CHELSEA'S OWN SOCCER TRAIN, in conjunction with British Rail, takes to the rails for the first time on Saturday, November 4, for our match at Liverpool, and YOU can be aboard it.

This is the start of an experiment by Chelsea F.C. to take supporters to away matches out of London at a cheaper rate than by scheduled services. Another "Chelsea Special" is planned for the game at Southampton on November 18.

Details of the Liverpool trip on November 4: Second Class return fare will be £2.40, and the First Class return ticket at £7 includes reserved train seat with lunch on the outward journey and dinner on return.

Departure times for Liverpool and back are as follows:

<i>Outward</i>		<i>Return</i>	
Dep. Euston	10.25	Dep. Liverpool	17.45
Arr. Liverpool	13.17	Arr. Euston	20.32

Reservations can now be made at the Chelsea F.C. Ticket Office (Main Entrance) during normal office hours. If you prefer to book by post, please write to Rail Bookings Manager, Chelsea F.C., Stamford Bridge Grounds, Fulham Road, London SW6 1HS, enclosing correct remittance and stamped, addressed return envelope.

Remember, by booking direct from Chelsea, your travel will be cheaper. So book early and make sure of your place on the CHELSEA TRAIN for Liverpool on November 4. Note that these reduced-price rail tickets will NOT be obtainable in advance from Euston, but direct from Chelsea only.

We have an allocation of reserved seats for the match at Liverpool on sale at our Box Office from today, price £1 each.

Pools flash: If you are unable to find an Agent in your area, you can still join the Chelsea Pool by sending a cheque or postal orders for £2.20p to cover the whole year ahead. This will bring you the chance every week to win one of the many big prizes in the Chelsea Pool. Please send remittance, together with name and address, to: Chelsea Pools Association, Chelsea F.C., Stamford Bridge Grounds, Fulham Road, London SW6 1HS.

By Albert Sewell

BETWEEN OURSELVES

Programme Editor

GOOD afternoon. And here, by way of a change from all that we've been reading and hearing about the game lately, is the **GOOD** news on the football front. Lots of it. For a start, some 1,050 footballers appeared for the 92 League clubs last week-end and 1,000 of them did **NOT** get booked. Wasn't that good? Yes, but it was the other four dozen who made the news. And of the 46 referees in charge of those games, 44 did **NOT** need to send anyone off. Wasn't that good? And for the third successive Saturday there wasn't a goalless match in the First Division. Good for the game? Of course it was.

More than 580,000 spectators turned out, and at the end of the afternoon all but a handful of them had **NOT** been arrested. Wasn't that good? And the big majority of clubs staging the week-end's League programme did **NOT** report punch-ups on the terraces. (Which is not to say the day was entirely unsoiled by the hooligan element—for example Chelsea players and officials, arriving at Birmingham New Street, were spat upon and verbally abused by a moronic section of Manchester United followers who were spilling out of the station at the same time, en route to West Bromwich.)

Almost non-stop for two months the media have been headlining the slump in attendances. O.K., so it's happened, but constantly harping on it will not solve the problem . . . only heighten it by conditioning more people to staying away. If it continues, perhaps the Football League will order clubs not to announce attendance figures for a test period, just as the Ministry of Transport stopped issuing Christmas and Bank Holiday road death statistics because their effect was more harmful than beneficial.

About soccer's present problems, wasn't it time that someone said what Fulham manager Alec Stock was saying just the other day? Listen to some good sense: "If you are running a shop," said Alec, "you don't advertise the worst of your products, do you? Public relations means showing the smile on your face, not your hangovers. Here we are in the middle of a great hiatus about attendances, and is it so surprising when such big voices have been telling the public that we are presenting a dirty show?"

"Telling us that we are infested with dirty players, that many are layabouts, that the game is little good. It's a funny thing about hooliganism. A year ago I thought football had it under control. You never seemed to notice it around any longer. Now it's back again. Do we not help it back by painting our own house so black?"

"Minority statistics seem to govern opinions. The statistics I have studied show that the majority of players and games are on the right side of the line . . . There should be far more faith in the professionals, the people who love the game and want to see it survive, not disintegrate. Let's shout about the values of our national sport. There ARE plenty, you know. If I didn't think so, I'd quit working in football tomorrow."

Well spoken, Alec, and as I see it, there's not really much wrong with football that a little less of it won't put right. Let's return to a proper close season with no football played on our League grounds between May and August and no football on our TV screens either after the last of the season's Internationals and the European Cup Final.

Let's get back to a state of mind in which everyone is eager for the start of a new season. Let the authorities realise that the fans' appetite needs to be whetted, and not destroyed by such publicly unwanted competitions as the Watney Cup, the Texaco Cup, the Anglo-Italian Cup and now, heaven help us, a proposed end-of-season cup for Third and Fourth Division clubs. Please, please, Football League, leave some time for the grass to grow . . . and for the fans' enthusiasm for each new season to grow with it.

Tables, appearances and goalscorers

FOOTBALL LEAGUE—DIVISION I

	P	W	D	L	F	A	W	D	L	F	A	Pts
Liverpool	12	6	0	0	17	4	2	2	2	8	8	18
Arsenal	13	5	2	0	12	3	1	2	3	5	7	16
Tottenham	12	5	1	0	11	5	2	1	3	7	8	16
Everton	12	4	1	1	8	3	2	2	2	6	6	15
Leeds	12	5	1	1	17	6	1	2	2	6	9	15
Wolves	12	5	0	0	16	7	1	3	3	9	14	15
Sheff. Utd.	12	4	1	2	8	6	2	2	1	7	9	15
CHELSEA	12	3	0	2	10	6	2	4	1	10	8	14
Ipswich	12	2	2	2	7	6	3	2	1	9	8	14
West Ham	12	4	1	0	14	4	1	2	4	6	10	13
Newcastle	12	4	1	2	12	9	2	0	3	9	9	13
Norwich	12	3	3	0	8	4	2	0	4	5	13	13
S'th'mpton	12	2	2	1	6	4	1	2	4	3	7	10
W. BROM.	12	2	3	2	7	8	1	1	3	4	6	10
Leicester	12	2	3	2	7	7	1	1	3	6	10	10
Derby	12	4	0	1	7	4	0	2	5	2	13	10
Birmingham	13	3	2	1	13	9	0	1	6	4	14	9
Man. City	12	4	1	1	9	4	0	0	6	3	15	9
Coventry	12	1	2	3	5	10	2	1	3	3	4	9
Crystal P.	12	2	2	3	4	7	0	2	3	3	8	8
Stoke	12	2	3	0	12	6	0	0	7	7	18	7
Man. Utd.	12	1	3	2	5	4	0	2	4	4	11	7

FOOTBALL COMBINATION

	P	W	D	L	F	A	Pts
Ipswich Town	12	7	3	2	21	6	17
Arsenal	11	7	3	1	22	8	17
Tottenham Hotspur	10	6	4	0	25	7	16
Southampton	13	7	1	5	26	16	15
CHELSEA	12	5	5	2	12	9	15
Swindon Town	11	5	3	3	19	13	13
Norwich City	12	5	3	4	18	15	13
Fulham	12	5	3	4	13	11	13
Birmingham City	12	6	1	5	14	17	13
Cardiff City	10	4	4	2	14	9	12
Oxford United	9	3	5	1	11	7	11
Bristol Rovers	11	4	3	4	15	11	11
Leicester City	11	4	3	4	9	15	11
Queen's Park Rangers	12	3	4	5	13	15	10
Bristol City	11	3	4	4	10	15	10
Swansea City	10	4	1	5	20	24	9
Crystal Palace	10	3	1	6	12	18	7
West Ham United	12	2	1	9	7	25	5
Bournemouth	10	1	2	7	8	19	4
Plymouth Argyle	11	1	2	8	10	27	4
Reading	8	2	0	6	7	19	4

SOUTH-EAST COUNTIES LEAGUE—DIV. I

	P	W	D	L	F	A	Pts
Arsenal	9	7	2	0	29	10	16
Tottenham Hotspur	9	7	1	1	22	7	15
CHELSEA	9	6	2	1	31	10	14
Charlton A.	9	5	2	2	14	13	12
Millwall	9	4	3	2	29	16	11
Queen's Park Rangers	8	3	3	2	10	10	9
Brentford	8	2	4	2	10	9	8
Watford	9	3	2	4	9	9	8
West Ham United	8	3	1	4	13	10	7
Fulham	9	3	1	5	12	16	7
Southend United	8	2	3	3	6	10	7
Crystal Palace	7	2	2	3	9	11	6
Orient	7	2	2	3	8	10	6
Ipswich T.	9	3	0	6	12	22	6
Luton T.	9	1	3	5	4	21	5
Gillingham	7	0	3	4	10	15	3
Reading	8	1	0	7	5	34	2

FOOTBALL LEAGUE

GARLAND	12	HOUSEMAN	5 (2)
HARRIS	12	DROY	5 (1)
HOLLINS	12	DEMPSEY	2
KEMBER	12	FEELY	2
McCREADIE	12	LOCKE	2
BONETTI	11	GARNER	1 (1)
OSGOOD	11	BASON	1
WEBB	11	PHILLIPS	1
COOKE	7 (1)	BOYLE	— (1)
HUDSON	7	HINTON	— (1)
MULLIGAN	6		

Goalscorers: Garland 7, Osgood 4, Cooke 2, Houseman 2, Feely 1, Garner 1, Harris 1, Webb 1, Opponent 1. Total 20.

FOOTBALL LEAGUE CUP

BONETTI	3	WEBB	3
HARRIS	3	BOYLE	2
HOLLINS	3	GARLAND	2
HOUSEMAN	3	LOCKE	2
KEMBER	3	DROY	1
McCREADIE	3	HINTON	1
OSGOOD	3	MULLIGAN	1

Goalscorers: Garland 1, Kember 1, Osgood 1, Webb 1. Total 4.

FOOTBALL COMBINATION

BRITTON	11	SHERWOOD	5
BROWN	10 (1)	BASON	3
POTRAC	10	DROY	3
BROLLY	9 (2)	MULLIGAN	3
LAWRENCE	9	HUTCHINSON	2 (1)
LOCKE	9	DEMPSEY	2
DAVIS	8	P. SEES	2
HINTON	8	WEBB	2
WILKINS (G.)	8	FINNIESTON	1
PHILLIPS	7	HOUSEMAN	1
STANLEY	6 (1)	SPONG	1
BOYLE	6	R. WILKINS	1
FEELY	5	PERKINS	— (1)

Goalscorers: Brown 2, Feely 2, Lawrence 2, Bason 1, Davis 1, Hinton 1, Potrac 1, Stanley 1, Webb 1. Total 12.

Figures in brackets = appearances as substitute.

S.E. COUNTIES LEAGUE—DIVISION I

D. RICHARDSON	9	J. SPARROW	5
FINNIESTON	9	DAVIS	4
SPONG	9	J. McMORRAN	4
D. LUCAS	8	BROLLY	3
R. WILKINS	8	WILKINS, G.	3
C. HARRIS	7	R. LEWINGTON	2
PERKINS	7	B. BOLTON	2
P. SEES	7	M. SORENSEN	1
T. MAYBANK	6	R. STEER	— (2)
BASON	5	L. BRILEY	— (1)
		T. CUNNINGHAM	— (1)

Goalscorers: Finnieston 21, Bason 3, Davis 3, Brolly 1, McMorran 1, Perkins 1, Spong 1. Total 31.

MUSIC AT STAMFORD BRIDGE

THE records played here at Chelsea are available from all Musicland branches and now also from all Scene & Heard shops. Those in the area are: Musicland at 230 Portobello Road, W.11; 66 Ealing Broadway, W.5; 44 Berwick Street, W.1. Scene & Heard at 199-200 Earls Court Road, S.W.5; 43 Oxford Street, W.1; 47 High Street, Kensington.

FIXTURES 1972-73

Football League

Copyright of the Football League

1972	Opponents	Venue	Result	Goalscorers	Attendance	
					Home	Away
Sat. Aug. 12	LEEDS UTD.	HOME	W 4-0	Osgood, Cooke, Garland 2	51,102	
Wed. " 16	Leicester City	Away	D 1-1	Garland		22,873
Sat. " 19	Derby County	Away	W 2-1	Harris, Garland		31,868
Wed. " 23	LIVERPOOL	HOME	L 1-2	Garland	35,735	
Sat. " 26	MAN. CITY	HOME	W 2-1	Osgood, Houseman	30,845	
Wed. " 30	Manchester U.	Away	D 0-0			44,482
Sat. Sept. 2	Arsenal	Away	D 1-1	Cooke		46,675
Sat. " 9	WEST HAM U.	HOME	L 1-3	Garland	34,392	
Sat. " 16	Sheffield United	Away	L 1-2	Garland		24,458
Sat. " 23	IPSWICH TOWN	HOME	W 2-0	Osgood Feely	29,647	
Sat. " 30	Coventry City	Away	W 3-1	Garner, Opponent, Houseman		20,058
Sat. Oct. 7	Birmingham City	Away	D 2-2	Osgood, Webb		38,756
Sat. " 14	WEST BROM. A.	HOME	W 3-1			
Sat. " 21	Tottenham H.	Away	W 1-0			
Sat. " 28	NEWCASTLE U.	HOME	D 1-1			
Sat. Nov. 4	Liverpool	Away			
Sat. " 11	LEICESTER C.	HOME			
Sat. " 18	Southampton	Away			
Sat. " 25	CRYSTAL PAL.	HOME			
Sat. Dec. 2	Stoke City	Away			
Sat. " 9	NORWICH CITY	HOME			
Sat. " 16	Wolverhampton W.	Away			
Sat. " 23	EVERTON	HOME			
Tues. " 26	Ipswich Town	Away			
Sat. " 30	DERBY CO.	HOME			
1973						
Sat. Jan. 6	Manchester City	Away			
Sat. " 20	ARSENAL	HOME			
Sat. " 27	West Ham United	Away			
Sat. Feb. 10	SHEFFIELD U.	HOME			
Sat. " 17	Leeds United	Away			
Sat. " 24	WOLVES	HOME			
Sat. Mar. 3	BIRMINGH'M C.	HOME			
Sat. " 10	West Bromwich A.	Away			
Sat. " 17	TOTTENHAM H.	HOME			
Sat. " 24	Newcastle United	Away			
Sat. " 31	Crystal Palace	Away			
Sat. Apr. 7	STOKE CITY	HOME			
Sat. " 14	Norwich City	Away			
Tues. " 17	Everton	Away			
Sat. " 21	SOUTHAMPTON	HOME			
Mon. " 23	COVENTRY C.	HOME			
Sat. " 28	MAN. UNITED	HOME			

Golden Goals: This season we specially request postal claims by Golden Goals prize-winners. The procedure is shown on the tickets, and goal-times can be checked in the *Evening News* and *Evening Standard* on Mondays after a Saturday home match and on the day after a mid-week fixture.

Goal times v. Derby County

£50 5 mins. £10 62 mins.
 10 secs. 27 secs.

SEAT RESERVATIONS

The only seats on general sale for home League matches this season are 3,000 (uncovered) in the West Stand Enclosure, price 60p. You may write at any time, stating number of seats required and enclosing correct remittance and return envelope, or you may call at the Ticket Office Monday-Friday (hours 9.30 a.m.-4.30 p.m.).

Football League Cup

Wed. Sept. 6	(2) Southend Utd.	Away	W 1-0	Garland	24,160
Wed. Oct. 4	(3) Derby County	Away	D 0-0		28,065
Mon. " 9	(Replay) DERBY	HOME	W 3-2	Kember, Webb, Osgood	26,395
Tues. " 31	(4) Bury	Away		

Dates of other rounds: (5) Nov. 22; (Sf.) Dec. 6 & 20; (Final—Wembley) Feb. 17.

F.A. Cup

(3) Jan. 13; (4) Feb. 3; (5) Feb. 24; (6) Mar. 17; (Sf) Apr. 7; (Final—Wembley) May 5.

Cup Tickets: Notice to Season-Ticket Holders

HOME matches, including replays, in the League Cup or F.A. Cup are treated strictly in the order played at this ground. As announced on your season-ticket renewal form, in the case of a home cup-tie or replay, 25% of all seats must be allocated to the visitors and in the circumstances at one out of every four such ties season-ticket holders will not be able to apply for their own seat.

All season-ticket holders were sent, with their book, an S.R.S. ticket which carries details of their door, row and seat number, and in the top left-hand corner a code number. The first two figures, before the / of the code number, determine when you can or cannot apply for your own seat. The following will show how the system works.

If the first two figures of your code number are:

- 10/ or 11/ you cannot apply for your own seat for the 1st or 5th cup-tie
- 20/ or 21/ you cannot apply for your own seat for the 2nd or 6th cup-tie
- 30/ or 31/ you cannot apply for your own seat for the 3rd or 7th cup-tie
- 40/ or 41/ you cannot apply for your own seat for the 4th or 8th cup-tie

For the match or matches at which we are unable to allocate you your own seat, you can apply for a bench seat in the West (open) Enclosure.

ONE DOWN, 2-1 UP AND FINALLY



The words on the hoarding say "Well saved . . ." but there is no stopping this shot by Peter Osgood that made the score 1-1 at Birmingham last Saturday.



All in a line, with everyone facing the same way. Steve Kember looks a certain scorer, but Carroll blocked his shot.

TWO A PIECE AT BIRMINGHAM



From a free-kick by John Hollins, Ossie goes diving in for a header that brought a fine save. Today we are due to face another goalkeeper named Latchford—Dave's brother Peter.



David Webb (right) watches his shot find the net and put us 2-1 ahead. But the final goal went to Birmingham's Bob Latchford, so the result was two-all.

PAGE FROM THE PAST: SEASON 1952-53

THE seventh post-war League season was ushered in at Stamford Bridge on a note of high expectancy. Ted Drake had succeeded Billy Birrell, and John Battersby assumed full secretarial responsibility, having joined us as assistant-secretary in January 1949. The new Manager began by establishing a fresh "image" for the Club, and gone forever was the Pensioner as the Chelsea emblem.

Seven points came from the first four home games, with 4-0 wins over both Blackpool and Aston Villa, and better days seemed to have arrived. By Christmas, however, only fourteen points had accrued from twenty-one games, and Chelsea stood 20th in the table—only one point better off than Stoke City in bottom place.

New faces were obviously a top priority. Johnny McNichol had arrived from Brighton & Hove Albion during the close season and was soon followed by a series of other signings from lower divisions: Ron Greenwood (returning to his first club from Brentford), Leslie Stubbs (Southend Utd.), Frank Blunstone (Crewe Alexandra). Amateur Jim Lewis, from Walthamstow Avenue, was also drafted in, while Miles Spector, a boy winger at Hendon County Grammar School, played five games, including three cup-ties.

Among those who left the staff were goalkeeper Harry Medhurst (only temporarily, of course!), Billy Gray, Sid Bathgate and Benny Jones; Albert Tennant was appointed coach when Len Goulden moved on to Watford as manager.

For the second time in three seasons, the final League match, at home to Manchester City, was to determine the immediate future of the Club. This time the situation was more clear-cut, in that a Chelsea win would lift them above Stoke City and into a safe place in the table, the Potteries men having completed their programme.

Two controversial decisions helped to decide the match. First Eric Parsons was felled in a tackle that many thought was outside the area, but a penalty was given—

and gratefully accepted by John Harris. Five minutes later Jim Lewis added a second from a suspiciously offside position.

City reduced the arrears just before half-time, but McNichol scored No. 3, and once again there were celebrations for a last-ditch reprieve.

Despite the lack of sustained playing success, a new spirit had been instilled. The fifth round of the F.A. Cup was reached after six matches. At Derby a two-goal deficit at half-time became 1-4 with barely twenty minutes left, before three late goals from Parsons, Armstrong, and McNichol forced a replay. The second match went to extra time before another goal by Parsons brought victory.

Then came a marathon against West Bromwich Albion, stretching over four games and seven hours—Chelsea's longest tie up to that time. A 1-1 draw at Stamford Bridge was followed by a dour, goalless struggle at The Hawthorns. Up to Villa Park for part three, and another 1-1 result, but the fourth match at Highbury brought a second-half scoring spree—four goals to Chelsea coming in a 23-minute spell to settle the match.

But 72 hours was scarcely time to recover from such fatigue (three F.A. Cup-ties in a single week even by today's congested standards would surely be considered excessive), and Birmingham City won in a canter 4-0 at Stamford Bridge.

HOW THEY FINISHED IN 1952-53

	P	W	D	L	F	A	Pts
Arsenal ..	42	21	12	9	97	64	54
Preston N.E. ..	42	21	12	9	85	60	54
Wolverhampton W.	42	19	13	10	86	63	51
W.B.A. ..	42	21	8	13	66	60	50
Charlton Ath. ..	42	19	11	12	77	63	49
Burnley ..	42	18	12	12	67	52	48
Blackpool ..	42	19	9	14	71	70	47
Manchester U. ..	42	18	10	14	69	72	46
Sunderland ..	42	15	13	14	68	82	43
Tottenham H. ..	42	15	11	16	78	69	41
Aston Villa ..	42	14	13	15	63	61	41
Cardiff C. ..	42	14	12	16	54	46	40
Middlesbrough ..	42	14	11	17	70	77	39
Bolton W. ..	42	15	9	18	61	69	39
Portsmouth ..	42	14	10	18	74	83	38
Newcastle U. ..	42	14	9	19	59	70	37
Liverpool ..	42	14	8	20	61	82	36
Sheffield W. ..	42	12	11	19	62	72	35
CHELSEA ..	42	12	11	19	56	66	35
Manchester C. ..	42	14	7	21	72	87	35
Stoke C. ..	41	12	10	20	53	66	34
Derby Co. ..	41	11	10	21	59	74	32

CHELSEA v WEST BROMWICH

A N A G R A M

SOLVE the 11 player anagrams (five each from Chelsea and West Brom. plus one from a "neutral" club), then place them in their right positions in 1-11 order to create a combined TEAM in the right-hand column. (Answers on page 19)

CHELSEA (All played in last 10 years)	CLUES	TEAM
(a) Brolly yard	Now with Fulham	1
(b) Bold wit, my man!	Chelsea man for past six years	2
(c) Dan's char girl!	£100,000 buy last season	3
(d) Brim on jar	Former goalkeeper	4
(e) Call in Rod, now	Burnley defender now	5
NEUTRAL (f) Bobby led lark	Crystal Palace player	6
WEST BROMWICH ALBION (All played in last 15 years)		
(g) Lean on liner	Has since managed in Europe	7
(h) A dash for art	Scottish International	8
(i) He do now!	Back with Albion	9
(j) Hanky, Joe?	Originally a forward	10
(k) I harm a small wig.	Former captain	11

Chelsea v. West Bromwich Albion

Past League Results

Season	Home	Away	Season	Home	Away
1905-06	1-0	1-1	1950-51	1-1	1-1
1906-07	2-0	2-1	1951-52	1-3	1-0
1910-11	2-1	3-1	1952-53	0-2	1-0
1912-13	0-2	1-0	1953-54	5-0	2-5
1913-14	1-1	1-3	1954-55	3-3	4-2
1914-15	4-1	0-2	1955-56	2-0	0-3
1919-20	2-0	0-4	1956-57	2-4	1-2
1920-21	3-0	1-1	1957-58	2-2	1-1
1921-22	1-1	2-2	1958-59	0-2	0-4
1922-23	2-2	0-0	1959-60	2-2	3-1
1923-24	0-0	2-2	1960-61	7-1	0-3
1927-28	1-1	0-3	1961-62	4-1	0-4
1928-29	2-5	0-3	1963-64	3-1	1-1
1929-30	2-0	0-2	1964-65	2-2	2-0
1931-32	0-2	0-4	1965-66	2-3	2-1
1932-33	1-2	2-3	1966-67	0-2	1-0
1933-34	3-2	1-3	1967-68	0-3	1-0
1934-35	2-3	2-2	1968-69	3-1	3-0
1935-36	2-2	2-1	1969-70	2-0	1-3
1936-37	3-0	0-2	1970-71	4-1	2-2
1937-38	2-2	0-4	1971-72	1-0	0-4
1949-50	2-1	1-1			

(In all results, Chelsea's score is given first.)

Summary

	P	W	D	L	F	A	Pts
Home	43	19	12	12	84	62	50
Away	43	13	11	19	48	82	37
Total	86	32	23	31	132	144	87

THE MATCH LAST SEASON

September 1: **Chelsea 1** (Hollins), **West Bromwich Albion 0**. Half-time: 1-0. Attendance: 29,931.

John Hollins shot the winner ten minutes before half-time—a magnificent left-foot volley when Ron Harris centred over the Albion defence.

One goal was little reward for so much attacking play. In the second-half Alan Hudson hit a post from 25 yards, Charlie Cooke also hit a post and John Dempsey and Cooke both had efforts cleared off the line.

WEST BROM'S RESULTS THIS SEASON

(Numbered in sequence order)

FOOTBALL LEAGUE

Home	Away
1. West Ham D 0-0	3. Leeds Utd. L 0-2
2. Tottenham L 0-1	4. Newcastle D 1-1
5. Sheff. Utd. L 0-2	7. Everton .. L 0-1
6. Birmingham D 2-2	10. C. Palace.. W 2-0
9. Derby C. .. W 2-1	14. Man. City L 1-2
12. Coventry .. W 1-0	
16. Man. Utd. D 2-2	

Goalscorers: Brown (Alistair) 3, Gould 3, Brown (Tony) 2, Suggett 2, Robertson 1. Total: 11.

LEAGUE CUP

Home	Away
8. Q.P.R. .. W 2-1	17. Liverpool L 1-2
15. Liverpool.. D 1-1	

Goalscorers: Brown (Tony) 1, Hartford 1, Robertson 1, Opponent 1. Total 4.

TEXACO CUP

Home	Away
13. Sheff Utd. W 1-0	11. Sheff. Utd. D 1-1

Goalscorers: Brown (Alistair) 1, Gould 1. Total 2.



Peter Bonetti calling Kevin Barnes



Hello, Kevin,

I hear you are a Chelsea fan . . . that you left home at Dartford last February and have not been heard of by your parents since. They think you may now be living and working in London, and if this is so I suppose there is a fair chance that you have come to Stamford Bridge this afternoon.

If you are here, could I ask you to call at the Chelsea Office, via the Main Entrance, after the game and ask for me. Perhaps you don't realise it, but your parents, and indeed your whole family, are very worried after not hearing from you for so long, and if it's at all possible I'd like to be able to help put you in touch with them again.

If you have any problems, let's meet and have a chat about them. I hope to see you after the game.

Yours, **Peter Bonetti.**

The anxious mother of a young Chelsea fan missing eight months pleads

Has anyone seen my boy?

IN our desire to help Kevin's parents in their efforts to trace their son, we asked his mother, Mrs. Jean Barnes if there was any message she wished to convey in the programme. In an interview at her home at Wellington Road, Dartford, Kent, this is what she said:

☛ Eight months is a long time to be wondering where your son is, and that is how long it is—last February—since we saw or heard from Kevin, who is now 15. Why did he vanish like that? I wish I knew. We'd had a mild disagreement—the sort of thing that happens occasionally in any family—and when I went to his bedroom a little later he had gone.

His father and I have searched and searched. So have the police, without any trace of him, although a week or so after he disappeared he was believed to be living and working in London . . . possibly, we think, in a hotel or restaurant. If only someone would come forward and say they have seen him or know where he is. Surely, there must be someone in a position to help us find him.

There are plenty of Chelsea photographs in Kevin's bedroom. Peter Bonetti is his favourite player, and we are very grateful for the interest the club and Mr. Bonetti are showing in helping us try to reach our son.

If you are reading this, Kevin, do please get in touch with us. You have nothing to worry about—the police are only interested in re-uniting us all—and I promise we won't be angry. We just want to know where you are and what you are doing. If you've got a job and are happy where you are living, we won't alter it. All we really want is to know you are all right.

That is Kevin's picture at the top of the page. He is 5 ft. 7 in. tall, slim build with brown hair, brown eyes and a semi-circular scar under the right eye. Could I ask anybody who knows his whereabouts to contact Chelsea Football Club (385 5545) or Dartford Police (32-23211)? Thank you so much. ♣

the Chelsea football book No. 3

Edited by Albert Sewell



Just out . . . and on sale here today

Chelsea Football Book No. 3

A WHOLE new range of Chelsea topics is brought together by Editor Albert Sewell in a magnificent third issue in the series which Stamford Bridge fans eagerly await each autumn.

Manager Dave Sexton and the irrepressible David Webb are the subjects of special close-up features. There's a revealing look into the planning behind the spectacular Stamford Bridge Stadium now being built . . . a nostalgic review of Chelsea's transfers from their first £1,000 signing in 1907 to the six-figure deals of modern times.

Dick Spence, longest-serving member of the Chelsea staff and light-hearted as ever, looks back on his 34 years at The Bridge. Another absorbing chapter, "Wembley 1972", recaptures the thrills of Chelsea's magnificent bid for a third successive cup last season.

All this and many other good things—including more than 70 photographs—are packed between Richard Attenborough's Foreword and a fascinating final section that lists, season by season, every player to wear the royal blue shirt in Chelsea's 67-year history. It all adds up to another great read for Chelsea fans in *THE CHELSEA FOOTBALL BOOK No. 3* (Stanley Paul, £1.15).

Pre-Match Spin: Pete Owen asks and answers

1. WHERE IS DAVE SCOTT?

I have, as you know, been presenting the show by myself this season. Shortly after Dave got married, he moved a good deal further away, and also during the close season became the proud father of a baby girl, Nicole. These two things plus the fact that since passing his Referee's Examination, he is officiating on some Saturday afternoons, are keeping him near to his London Colney home. You will, however, be able to hear his dulcet tones when I am on holiday in Tennessee. He will be presenting the programme on October 28th (v. Newcastle). Lots of requests to Dave, please, for that week.

2. WHERE IS PETE OWEN?

With the disappearance of the East Stand, you may wonder where Pre-Match Spin is now coming from. Well, I am tucked away in the Half-time Scoreboard next to the North Stand, in full view of the ground (for the first time).

3. WHERE ARE YOU and your requests?

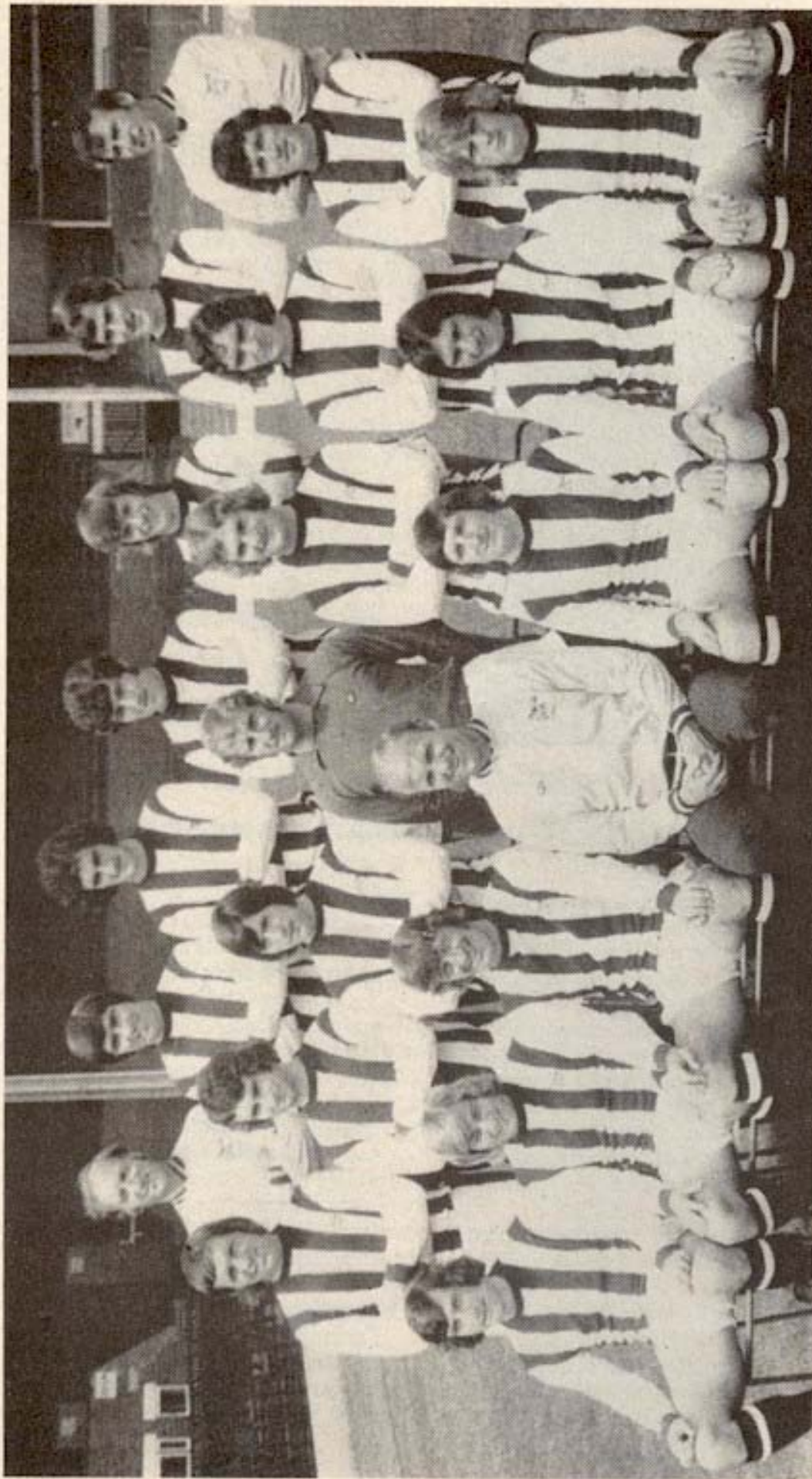
The aim of Pre-Match Spin is to provide music and entertainment to while away the minutes up to kick-off. We generally start shortly after the gates open and want to play the music that you want to hear. Requests, please, to: PRE-MATCH SPIN, CHELSEA FOOTBALL CLUB, STAMFORD BRIDGE GROUNDS, FULHAM RD., SW6 1HS.

Your request does not have to be for a particular birthday or anniversary, and if you want to hear a special type of music just let us know. Musicland/Scene & Heard supply us with the Top Twenty records for the programme, so if you want something that is not a current hit, please give me plenty of notice and I will do my best to acquire it.

Dedications for a particular day should be posted **two weeks** in advance.

P.S.—I must apologise to a few supporters for omitting their requests on August 26th. Their request cards were mislaid. So sorry.

WEST BROMWICH ALBION 1972-73



(Copyright West Bromwich Albion F.C.)

Back row: George Wright (Assistant Manager), Bobby Gould, Hugh Maclean, Alan Merrick, Colin Suggett, George McVitie (now with Oldham), Brian Whitehouse (Chief Coach).

Middle row: Jeff Astle, Roger Minton, Allan Glover, Graham Smith, Alistair Robertson, Alistair Brown, Ray Wilson.

Front row: Lyndon Hughes, Asa Hartford, John Wile, Don Howe (Manager), Tony Brown, Gordon Nisbet, Len Cantello.

FOCUS on our VISITORS

IN this their second season under the management of Don Howe, West Bromwich went the first seven League games without a win, at which stage they were at the bottom of the First Division. They ended that spell at home to League Champions Derby County and, by taking seven points from the last five matches (three wins, one draw, one defeat) they have made the steady climb of eight places up the table.

On their only previous visit to London this season Albion won 2-0 against Crystal Palace. Last Saturday they were held two-all at home to Manchester United after leading 2-0, Tony Brown having one of his rare penalty-kick lapses and shooting wide when a goal would have put the score at 3-1 and would probably have settled the match.

We had decidedly mixed experiences against Albion last season. We beat them here by the only goal early in the season, but found them in form when we went to The Hawthorns at the end of April, conceding four goals to the two Browns, Gould and Cantello and managing nothing

in reply. All of which, in our view, made their dismal opening to this season all the more mystifying.

WEST BROMWICH PLAYERS

PETER LATCHFORD: 19-year-old goalkeeper and youngest of three brothers currently playing First Division football—we faced the other two, Bob and Dave, at Birmingham last Saturday. Groomed in Albion's youth team, he made League debut against Sheff. Utd. in August. Born Birmingham. 6 ft., 12 st.

GORDON NISBET: This England Under-23 International full-back (one cap) made his League debut two years ago—as a goalkeeper. Following reserve appearances in midfield and attack, he was successfully switched to full-back by Don Howe. Born Wallsend-on-Tyne. 5 ft. 10 in., 11 st. 4 lb.

RAY WILSON: Young Scottish full-back who began his career on the wing but his speed has been best utilised in defence. Missed only two League games last winter. Born Grangemouth. 5 ft. 9 in., 11 st. 7 lb.

LEN CANTELLO: Versatile 21-year-old midfield player who gained his first England Under-23 cap last season against E. Germany. Approaching 100 League appearances. Born Manchester. 5 ft. 9½ in., 10 st. 8½ lb.

JOHN WILE: Albion captain and centre-half, he joined them from Peterborough for £30,000 in December 1970. Originally with Sunderland, he was ever-present for Albion last term. Born Sherburn. 6 ft. 1 in., 11 st. 12½ lb.

ALISTAIR ROBERTSON: Promising 19-year-old who broke a leg shortly after making his debut two years ago. After regaining fitness he won back senior place following the departure of John Kaye to Hull. Born Glasgow. 5 ft. 11 in., 11 st. 7 lb.

COLIN SUGGETT: Cost Albion their record fee of £100,000 when signed from Sunderland in June 1969. Former England Schoolboy and Youth cap, now operating in midfield. Born Washington, Co. Durham. 5 ft. 7½ in., 10 st. 12 lb.

TONY BROWN: Albion's leading marksman for the last two seasons. An England International (one cap), he signed professional in October 1963 and had scored 128 goals in 295 League appearances up to the start of this season. Born Oldham. 5 ft. 7 in., 11 st. 4 lb.

BOBBY GOULD: Joined Albion from Wolves in Sept. 1971 for £60,000. Previously with Arsenal and Coventry, he was the club's second highest scorer with 12 goals in 31 League games last season. Born Coventry. 5 ft. 10 in., 11 st. 5 lb.

ALISTAIR BROWN: Signed from Leicester for £55,000 last March and scored the winner on his Albion debut against Crystal Palace. Ever-present since his transfer. Born Edinburgh. 6 ft., 12 st.

ASA HARTFORD: Scottish International midfield player with six full and two Under-23 caps. Joined Albion as a junior and turned pro. in October 1967. Born Glasgow. 5 ft. 5½ in., 10 st. 11 lb.

LYNDON HUGHES: Local-born former England Schoolboy and Youth cap, he turned professional in January 1968. A defender with over 50 First Division appearances to his credit. Born Smethwick. 5 ft. 11 in., 11 st. 5 lb.



Club address:
The
Hawthorns,
West
Bromwich.

OFFICIALS

Chairman: MR. JIM GAUNT.
Secretary: MR. ALAN EVERISS, J.P.
Manager: MR. DON HOWE.
Assistant-Manager/Physiotherapist:
MR. GEORGE WRIGHT.
Chief Coach: MR. BRIAN WHITEHOUSE.
Captain: JOHN WILE.

HONOURS

Football League Champions 1920.
Second Division Champions 1902, 1911,
F.A. Cup Winners 1888, 1892, 1931, 1954,
1968.
Football League Cup Winners 1966.

he's my guy

A series about
The Chelsea Men
by The
Chelsea Girls

By ANN McCREADIE

WHEN I come to Stamford Bridge on match-days and see Eddie out there in the Chelsea shirt, I sometimes think I'm seeing a football miracle. This time last year he was wondering if his First Division days were over, yet now he's captain of Chelsea.

In two seasons since the F.A. Cup success in 1970, he'd had only a handful of games because of injuries. It was one darned thing after another. But while there's fight there's hope, and how he fought to overcome every setback.

At times the depression was awful. That was when he tried his hand at writing poetry—perhaps he'll let you read some of it in the programme some time. Gradually he began to feel he was winning, and the thing that gave him his biggest lift was being made captain last March. He was quietly thrilled, coming as it did when he was not yet back in the side.

A bad ankle had been the main trouble, but Eddie returned to the team for the season's final game at Leeds and that was the start of things beginning to go really well. When he came home from the club tour of Barbados in May he said the ankle had stood up to the very hard grounds out there. I was overjoyed for him.

Chelsea also gave him a new four-year contract, and Ed could hardly wait for this season to start . . . for the chance to repay the confidence Dave Sexton had shown in him. But before then, he went to Lilleshall on the F.A. Summer coaching course, and a few weeks ago he heard he'd earned his full certificate.

As you probably know, Eddie has been awarded a Testimonial this season. How those 10½ years have flown since he signed for Chelsea. Tommy Docherty

brought him here . . . and on the night of his transfer from East Stirling I knew about it before Eddie did!

We first met at a Hogmanay party (I lived up the road from Eddie in Glasgow) and by then were going steady. I was a hairdresser and Eddie—when he wasn't playing for East Stirling—worked as a window-dresser for a gents outfitters.

This particular night, in April 1962, I was sitting in the stand watching the game when Tommy Docherty arrived and sat nearby with a friend who introduced us. "How do you fancy coming to London?" was how he greeted me . . . and after the match Eddie signed for Chelsea.

The following year we were married. We settled down in

London from the start, and later this month we are moving from Molesey to Oxshott. We need the bigger house with three children—Paul is 7½, Sean is 3½ and Ann Marie is nearly 2½—and a pet Labrador, Troy, who's grown into a big lad since we had him as a pup in March.

Eddie likes to help around the house. Sometimes he'll bath the kids—I don't know who enjoys it most, him or them—and he'll have an occasional dabble at cooking. My own hobby just now (apart from the family) is shopping for our new house.

My biggest thrill? That's easy—to see Eddie playing big football this season. As he says, it's been like starting his career all over again.



MATCH SUMMARIES RESULTS TEAMS SCORERS

FOOTBALL LEAGUE

Saturday, 7th October.

Drew with BIRMINGHAM CITY (Away) 2-2. Half-time: Losing 0-1.

Birmingham: Latchford (D.); Carroll, Want, Burns (Campbell), Hynd, Page, Hope, Francis, Latchford (R.), Pendrey, Summerill.

Scorers: Hope, Latchford (R.).

Chelsea (red shirts): Bonetti; Locke, McCreadie, Hollins, Droy, Harris, Garland, Kember, Osgood, Webb, Houseman. Substitute (did not play): Bason.

Scorers: Osgood, Webb.

Referee: Mr. D. J. Biddle (Bristol).

Attendance: 38,756.

Hope gave Birmingham a 14th minute lead following a free-kick, and fine saves by Dave Latchford from Osgood and Webb meant that we were still behind at half-time. Some splendid Chelsea football was rewarded with goals by Osgood (56 mins.) and Webb (70), but four mins. later the other Latchford, Bob, equalised and for the remainder of the game we were denied the winner by his brother.

FOOTBALL LEAGUE CUP—3rd ROUND

Wednesday, 4th October.

Drew with DERBY COUNTY (Away) 0-0.

Derby: Boulton; Powell, Nish, Durban, McFarland, Todd, McGovern, Gemmill, O'Hare, Hector, Hinton.

Chelsea: Bonetti; Locke, McCreadie, Hollins, Droy, Harris, Garland, Kember, Osgood, Webb, Houseman. Substitute (did not play): Boyle.

Referee: Mr. T. W. Dawes (Bury St. Edmunds).

Strong defensive play brought us a rewarding result from a hard, vigorous match against the League Champions. Bonetti afterwards had three stitches in a head wound received in the opening stages. Four players were booked: Houseman, Droy, Harris, McFarland. Referee Dawes retired after 32 mins. because of blurred vision and was replaced by the senior linesman.

REPLAY

Monday, 9th October.

Beat DERBY COUNTY (Home) 3-2. Half-time: 2-1.

Chelsea: Bonetti; Locke, McCreadie, Hollins, Hinton (M.), Harris, Boyle, Kember, Osgood, Webb, Houseman. Substitute (did not play): Bason.

Scorers: Kember, Webb, Osgood.

Derby: Boulton; Robson, Nish, Powell, McFarland, Todd, McGovern, Gemmill, O'Hare, Hector, Hinton (A.).

Scorers: Hinton, McGovern.

Referee: Mr. J. Yates (Redditch).

Attendance: 26,395.

Injuries from Saturday ruled out Droy and Garland, but three stitches in a gashed ankle did not prevent Osgood playing and one of his best displays was capped by one of his finest goals. McGovern's mistake gave Kember the chance to shoot us ahead after 5 mins., but Alan Hinton equalised with a spectacular drive from outside the area. Two minutes later (15 min.) we were in front again when Webb headed in Boyle's left-wing corner that Marvin Hinton met at the near post. Seven mins. into the second half Houseman crossed from the left by-line and Osgood volleyed



Londoner EDWARD PETROS won two "Golden Goals" prizes on one day—first prize of £50 and a £1 bonus for being only one second out on another ticket—and here he is being presented with his cheque by Ian Hutchinson. Immediately after the presentation Eddie signed on as an Agent for the Chelsea Pools.

superbly past Boulton. After a collision of heads between Gemmill and O'Hare (both players later needed stitches) McGovern headed Derby's second with 25 mins. left. We held out under intense pressure that was fleetingly broken when Kember hit the post. Hector netted late for Derby but was ruled offside.

FOOTBALL COMBINATION

Saturday, 7th October.

Lost to BIRMINGHAM CITY (Home) 0-1.

Team: Phillips; P. Sees, Lawrence, Hinton, Wilkins (G.), Britton, Boyle, Broly (Perkins), Brown, Hutchinson, Stanley.

S.E. COUNTIES LEAGUE—DIV. I

Saturday, 7th October.

Drew with BRENTFORD (Away) 2-2.

Team: D. Richardson; B. Bolton, J. Sparrow, D. Lucas, Spong, Perkins, T. Maybank, R. Wilkins, Finnieston, J. McMorran (L. Briley), Davis.

Scorer: Finnieston 2.

S.E. COUNTIES LEAGUE—DIV. II CUP

Saturday, 7th October.

Drew with GILLINGHAM (Away) 1-1.

Team: J. Westwood; T. Cunningham, A. Peploe, M. Sorensen, C. Harris, A. Holliday, M. Wright, B. Marshall, A. Coombes, A. Pommell, C. Walker.

Scorer: Wright.

ANAGRAM ANSWERS

(See page 13)

The team is as follows: 1. Jim Barron (d). 2. Don Howe (i). 3. Graham Williams (k). 4. Bobby Kellard (f). 5. Colin Waldron (e). 6. John Kaye (j). 7. Chris Garland (c). 8. Tommy Baldwin (b). 9. Ronnie Allen (g). 10. Barry Lloyd (a). 11. Asa Hartford (h).

It's Webb—and we're A-HEAD again v. Derby!



On the front cover we show the photograph of Peter Osgood's winning goal against Derby here on Monday. On page five we feature the first goal of the night by Steve Kember . . . and, to complete the picture-story of a memorable Chelsea win, here's the "one in the middle", our second, headed by DAVID WEBB from John Boyle's corner and an assisting header by Marvin Hinton. Peter Houseman has a near-post view, and likes what he sees. Didn't we all!

Next home matches

Monday, 16th October (3 p.m.)

ORIENT

London Challenge Cup—2nd Round

©

Saturday, 21st October (11 a.m.)

TOTTENHAM HOTSPUR

Football Combination

©

Saturday, 28th October (3 p.m.)

NEWCASTLE UNITED

Football League

Keep this Coupon
It may help you
to obtain a Cup
Final Ticket.



TODAY'S HALF-TIMES

FIRST DIVISION

A	Arsenal v. Ipswich
B	Coventry v. Man. City
C	Derby v. Leicester
D	Everton v. Leeds
E	Man. Utd. v. Birmingham
F	Norwich v. Tottenham
G	Southampton v. Liverpool
H	Stoke v. Newcastle
J	West Ham v. Sheff. Utd.
K	Wolves v. C. Palace

SECOND DIVISION

L	Aston Villa v. Q.P.R.
M	Blackpool v. Oxford
N	Bristol C. v. Nottm. Forest
O	Cardiff v. Middlesbro
P	Carlisle v. Fulham
R	Huddersfield v. Brighton
S	Hull v. Portsmouth
T	Millwall v. Orient
U	Sheff. Wed. v. Burnley
V	Sunderland v. Luton
W	Swindon v. Preston

BOYS, KEEP OFF THE PITCH AT ALL TIMES — OR HALF-PRICE ADMISSION FOR JUVENILES WILL BE DISCONTINUED.